

**THE RISC SURVEY: ACTIONABLE DATA
TO INCREASE STUDENT SUCCESS**

Paul D. Umbach
Professor, North Carolina State University
Director, Revealing Institutional Strengths and Challenges Survey

1

PLAN FOR SESSION

- Give a little background on the RISC Survey
- Present some key findings from our survey of community colleges across the US
- Discuss implications of these findings for student success, degree attainment, and social mobility
- Questions

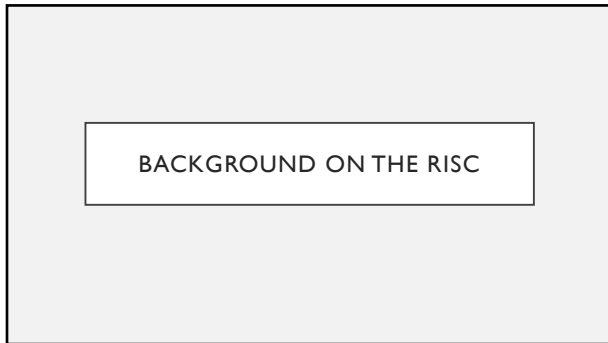
2



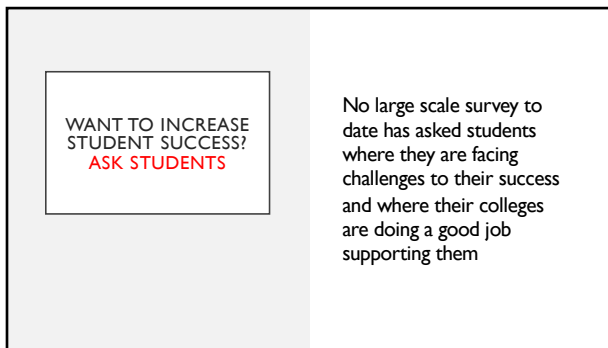
STRANDS OF MY RESEARCH

- Research has focused on diversity and equity among faculty and students
- Policy work looking at college access and degree attainment
 - College application week
 - Remediation
 - Community college transfer students
 - College Advising Corps
- Examined survey methods in college student and faculty surveys
- International work

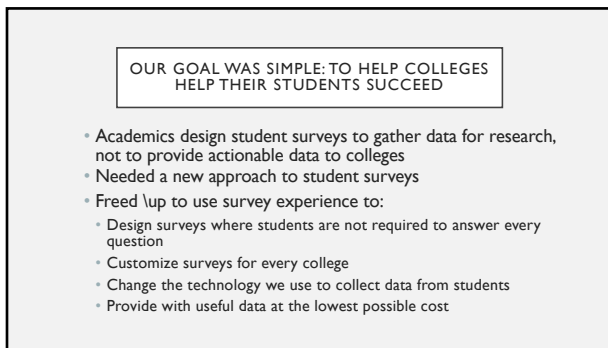
3



4



5



6

SURVEY OVERVIEW

- Challenges to student success
 - 80 unique challenges to student success across five different areas
- Student-office interactions
 - Ask about 5 functional areas using your actual office names
 - 3 dimensions: availability, concern, effectiveness
- Student views of the institution
 - Instead of asking ambiguous satisfaction questions, get at things colleges value
 - Recommend to a friend, value of their education, intent to persist, and meeting their goals

7

PRESENTING DATA FROM OUR COMMUNITY COLLEGE SURVEY

- Community colleges have the incredible capacity to enhance social mobility
 - Geography
 - Open enrollment
 - Developmental education
 - Relatively low cost
 - Intentional scheduling
- 38,880 students from 41 US community colleges

8

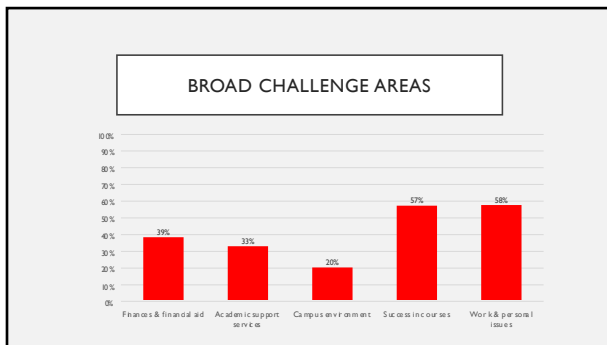
CHALLENGES STUDENTS FACE

9

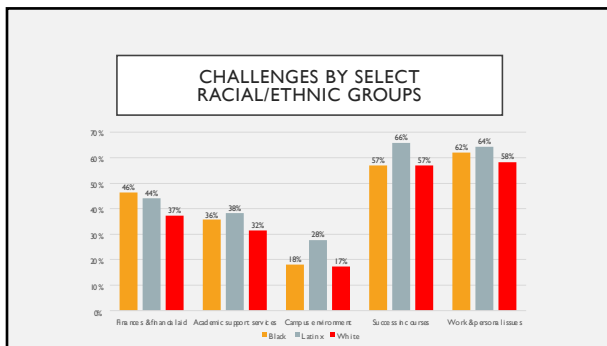
OVER 80 UNIQUE CHALLENGES TO STUDENT SUCCESS ACROSS FIVE DIFFERENT AREAS

- Finances and financial aid
- Academic support services
- Campus environment
- Success in courses
- Work and personal life

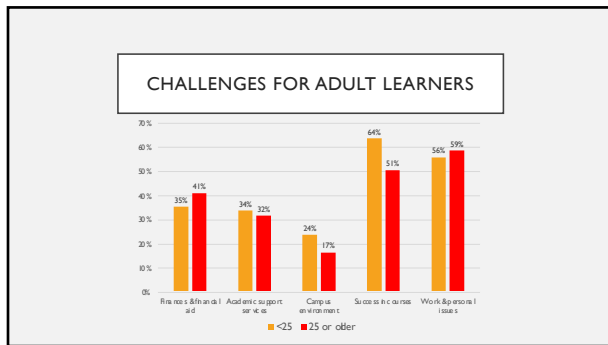
10



11



12



13

COLLECT DETAILED DATA ON CHALLENGES BY LEVERAGING BRANCHING

0% 100%

Think about your **success in courses**. Have you had any challenges in the following areas?

Yes No

Online classes

Developmental courses (math, reading and writing)

Faculty

Doing college-level work

14

COLLECT DATA ON CHALLENGES BY LEVERAGING BRANCHING

0% 100%

Think about your **success in courses**. Have you had any challenges in the following areas?

Yes No

Online classes

Developmental courses (math, reading and writing)

Faculty

Doing college-level work

What issues did you have with **online classes**?

Please check all that apply.

Difficulty learning the material on my own

Difficulty taking exams at testing center

Difficulty using course technology

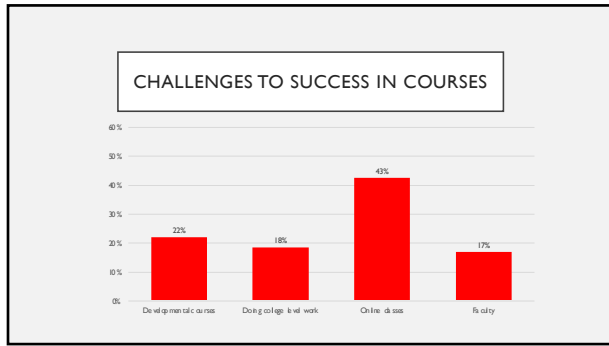
Difficulty keeping up because of no regular class times

Lack of interaction with other students

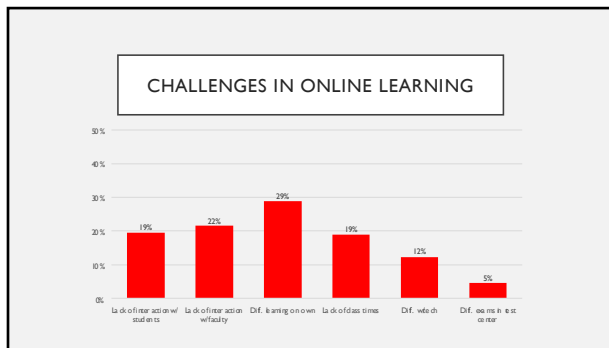
Lack of interaction with faculty

None of the above

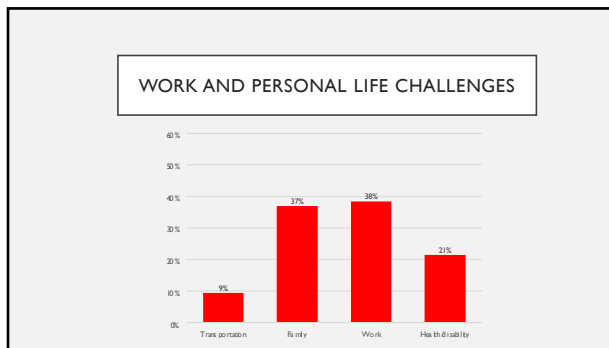
15



16



17



18

WORK AND FAMILY CHALLENGE DETAILS

- 22% indicated that work hours do not give them enough time to study
- 14% said work interferes with class schedules
 - 18% indicated they had trouble registering for courses (full, not offered when needed not offered in semester needed)
- 26% indicated difficulty balancing family demands and school

19

CONCLUSIONS

- Community college students experience an array of challenges to their success
- Not all students experience the same challenges
- If we want to move the needle on student success and enhance social mobility, we need good data and we need to act on these data

20

IMPLICATIONS FOR POLICY AND PRACTICE

- Challenges students experience can be ameliorated by college actions
 - Faculty development focused on online learning
 - Advising students about online classes
 - Course schedules that accommodate busy work and personal lives
- Increased need-based aid for students
- Direct funding to community colleges aimed at student support

21

THANK YOU!

Questions, comments, observations?

Email: paul@percontor.org or
paul_umbach@ncsu.edu
