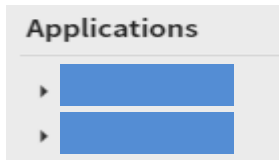


AppXtender 8.1 – Scanning

1. Log into AppXtender

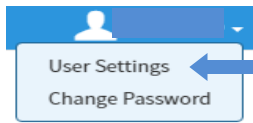
<https://webxt.odu.edu>

Enter your Midas ID and Password

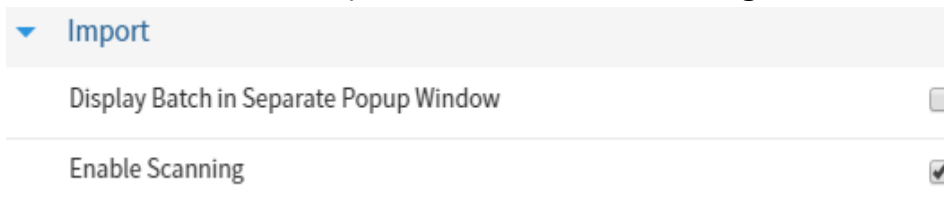


Select your application for your department.

First time scanning, Enable scanner



Click **down arrow** next to your name, select **User Settings**



Select **Import**, Click box next to **Enable Scanning**

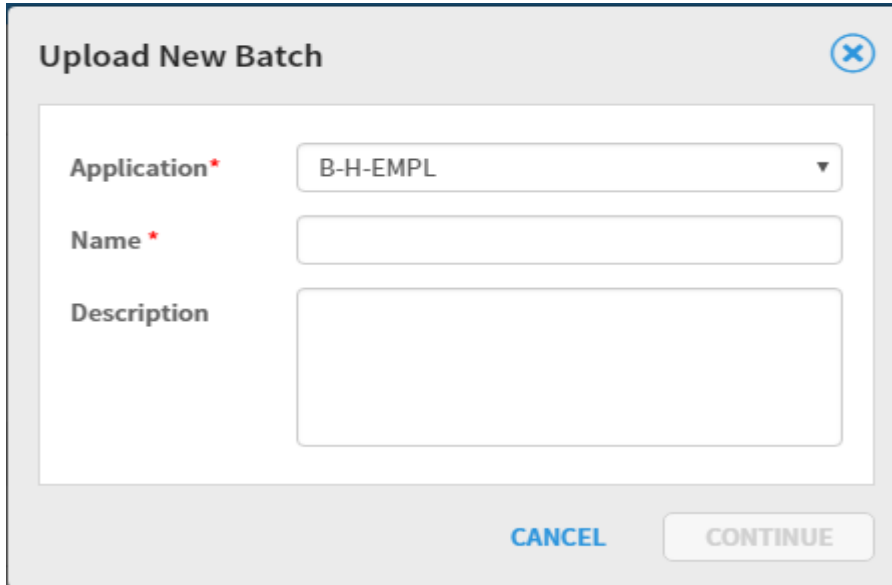
Click Save

2. Start a New Batch



Click **New Batch**

AppXtender 8.1 – Scanning



Upload New Batch

Application* B-H-EMPL

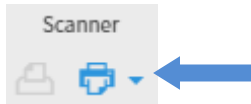
Name*

Description

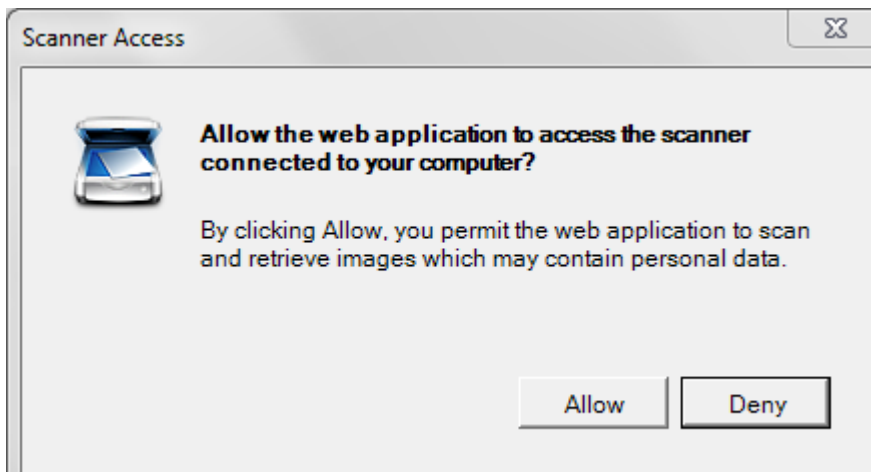
CANCEL CONTINUE

Enter **Name of Batch**, Click **Continue**

If scanner symbol is not highlighted, refresh the page

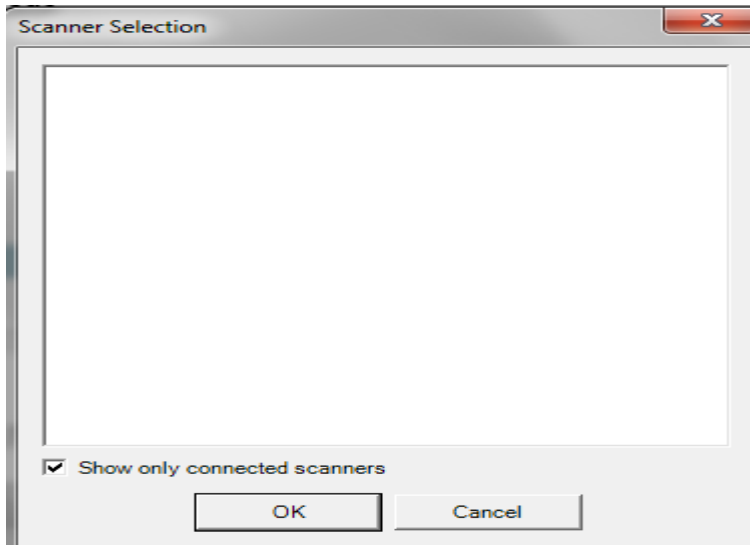


Click on **Scanner Icon**

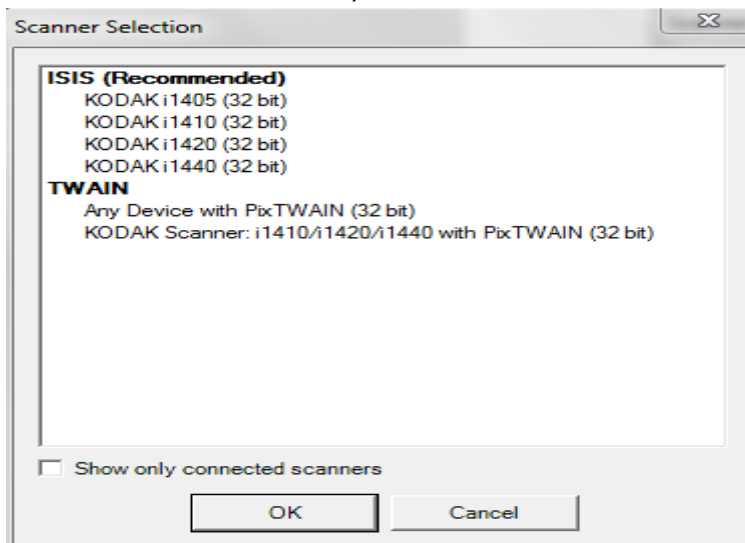


Click **Allow**

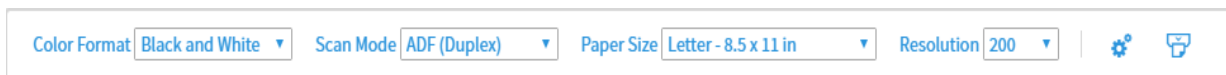
AppXtender 8.1 – Scanning



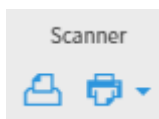
Uncheck next to show only connect scanners



Select **Scanner**, Click **OK**



Click down arrow next to scanner icon, and select settings



Click **Scan** to starting scanning