

Using Ivanti Portal Manager (Windows)

Available Applications:

Windows and Office (activation)

Adobe Acrobat DC

Adobe Connect Add-in

Cisco WebEx

EndNote X9

GlobalProtect VPN Client

Google Chrome

High-Volume Print Driver

Java 8 Update 161

Microsoft Sticky Notes

Microsoft Teams

And more...

Information Technology Services

www.odu.edu/its

(757) 683-3192

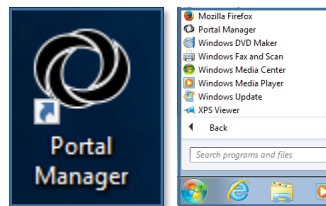
itshelp@odu.edu

1100 Monarch Hall

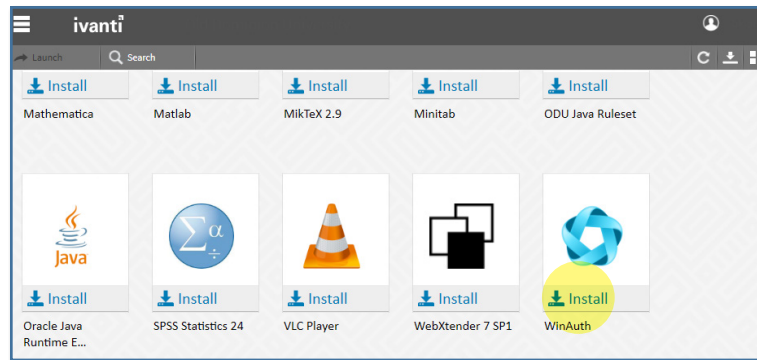
[oduits](#) [odu_its](#)

Portal Manager allows you to install applications on ODU-managed Windows computers. ITS can publish applications, web links and other configurations and make them available in Portal Manager. This guide will show you how to access and install applications.

1. Double-click the **Portal Manager** icon on your desktop. (Or find the Portal Manager under **All Programs** in your Start Menu.)

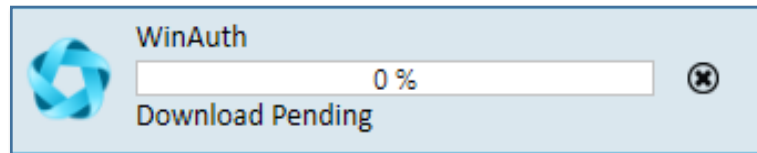


2. In the Portal Manager, you will see a list of applications that can be installed. Find the application that you wish to install, and click on **Install**.

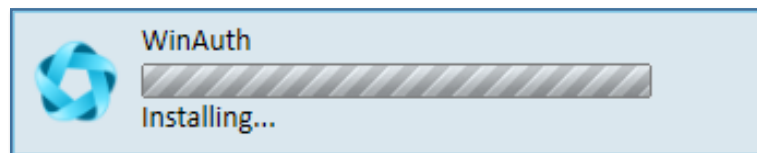


Click on this button to toggle between tiled view and list view.

3. Portal Manager will download all necessary files.



4. Installation could take several minutes to an hour, depending on the software.



If a reboot is required after installation, you will have a couple of minutes to save your data before your computer restarts. If an application is missing from Portal Manager, contact your TSP or the ITS Help Desk at itshelp@odu.edu.