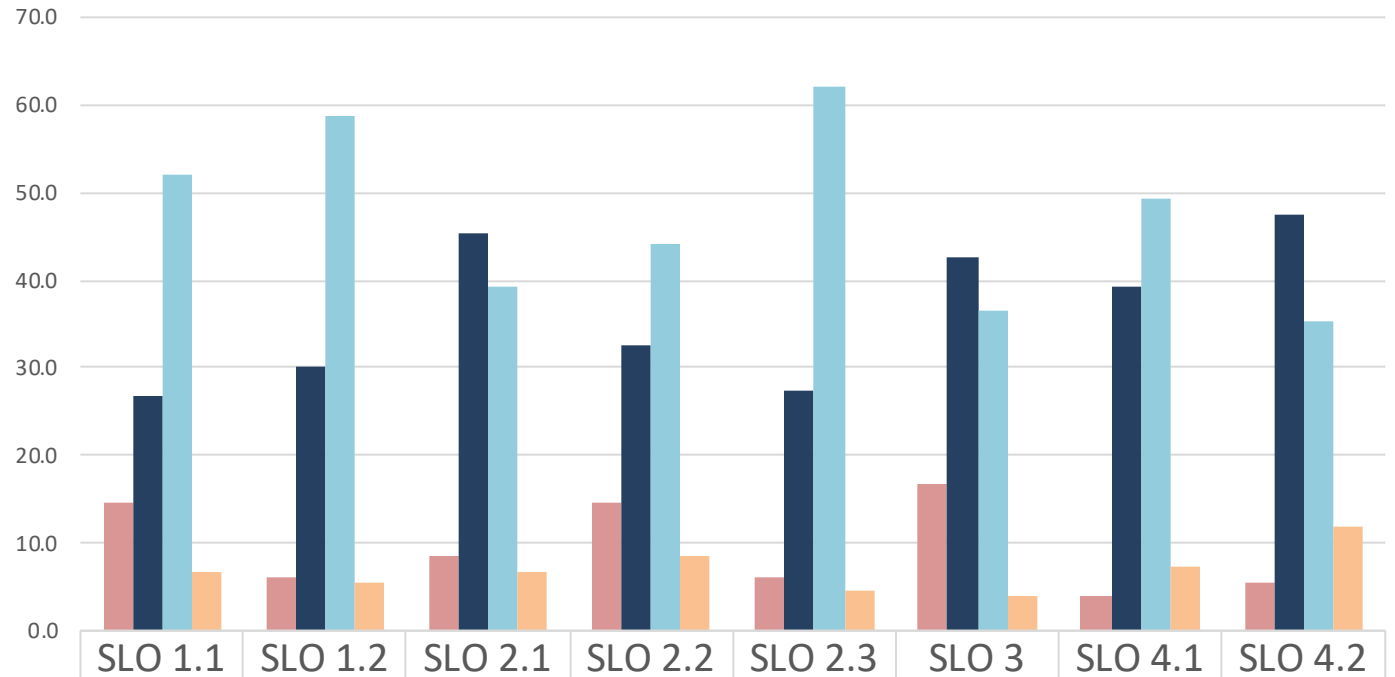


# General Education Literature

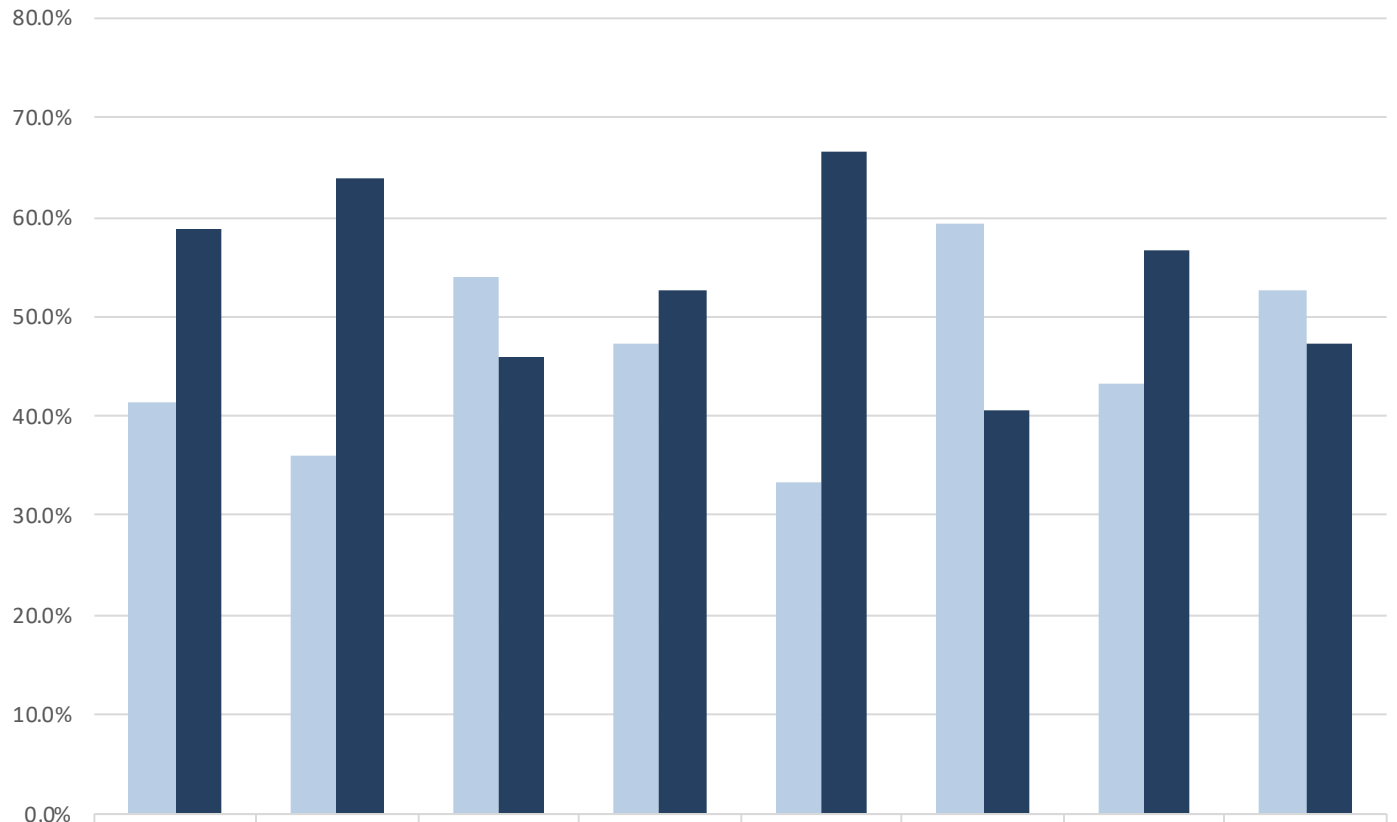
## 75 Artifacts scored



Needs Attention	14.7	6.0	8.7	14.7	6.0	16.7	4.0	5.3
Approaches Standard	26.7	30.0	45.3	32.7	27.3	42.7	39.3	47.3
Meets Standard	52.0	58.7	39.3	44.0	62.0	36.7	49.3	35.3
Exceeds Standard	6.7	5.3	6.7	8.7	4.7	4.0	7.3	12.0

# General Education Literature

## 75 Artifacts scored



	SLO 1.1	SLO 1.2	SLO 2.1	SLO 2.2	SLO 2.3	SLO 3	SLO 4.1	SLO 4.2
■ Below Standard	41.3%	36.0%	54.0%	47.3%	33.3%	59.3%	43.3%	52.7%
■ At/Above Standard	58.7%	64.0%	46.0%	52.7%	66.7%	40.7%	56.7%	47.3%

# General Education Literature

N = 75 Artifacts

	<b>At/Above Standards</b>	Exceeds Standard	Meets Standard	<b>Below Standards</b>	Approaches Standard	Needs Attention
SLO 1.1	<b>58.7%</b>	6.7	52.0	<b>41.3%</b>	26.7	14.7
SLO 1.2	<b>64.0%</b>	5.3	58.7	<b>36.0%</b>	30.0	6.0
SLO 2.1	<b>46.0%</b>	6.7	39.3	<b>54.0%</b>	45.3	8.7
SLO 2.2	<b>52.7%</b>	8.7	44.0	<b>47.3%</b>	32.7	14.7
SLO 2.3	<b>66.7%</b>	4.7	62.0	<b>33.3%</b>	27.3	6.0
SLO 3	<b>40.7%</b>	4.0	36.7	<b>59.3%</b>	42.7	16.7
SLO 4.1	<b>56.7%</b>	7.3	49.3	<b>43.3%</b>	39.3	4.0
SLO 4.2	<b>47.3%</b>	12.0	35.3	<b>52.7%</b>	47.3	5.3

# General Education Literature Inter-Rater Reliability

	Exact Match		Off By 1		Off By 2		Total	
	N	%	N	%	N	%	N	%
SLO 1.1	53	70.7	20	26.7	2	2.7	75	100
SLO 1.2	42	56.0	31	41.3	2	2.7	75	100
SLO 2.1	32	42.7	40	53.3	3	4.0	75	100
SLO 2.2	27	36.0	42	56.0	6	8.0	75	100
SLO 2.3	30	40.0	40	53.3	5	6.7	75	100
SLO 3	27	36.0	40	53.3	8	10.7	75	100
SLO 4.1	31	41.3	44	58.7	0	0.0	75	100
SLO 4.2	26	34.7	41	54.7	8	10.7	75	100

