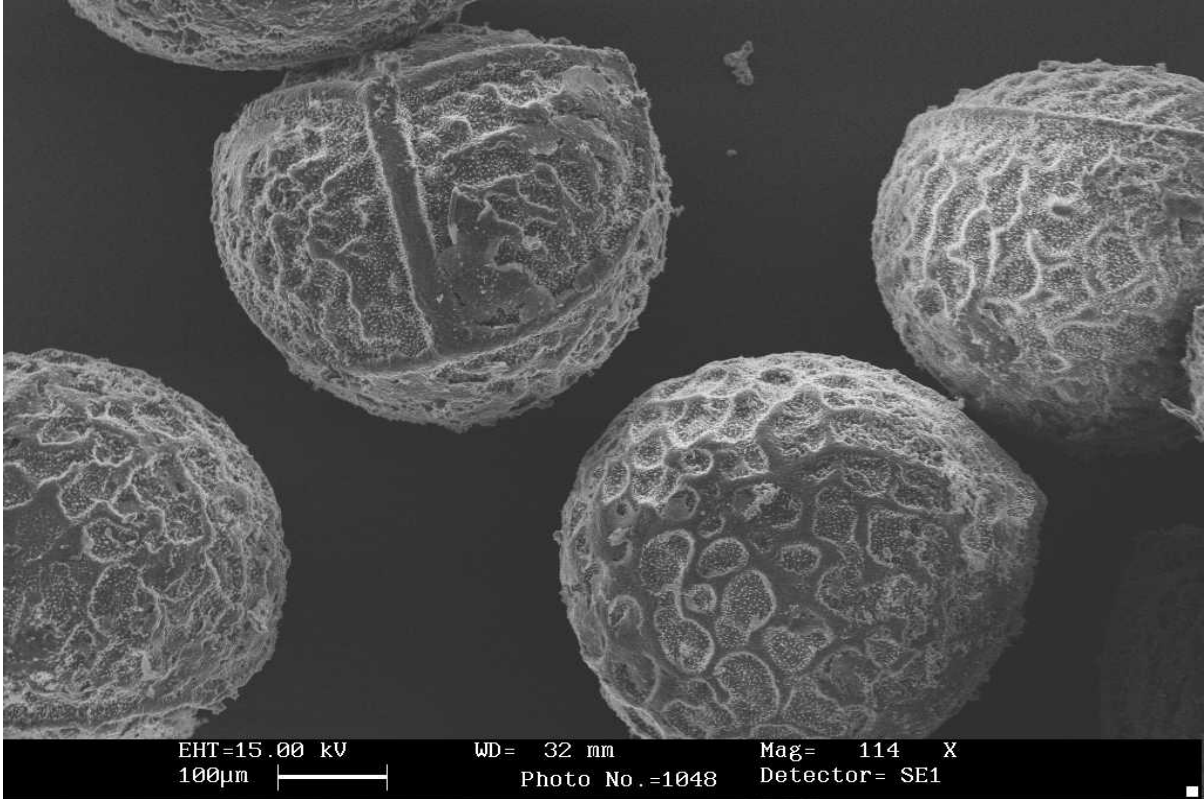


Fall 2000

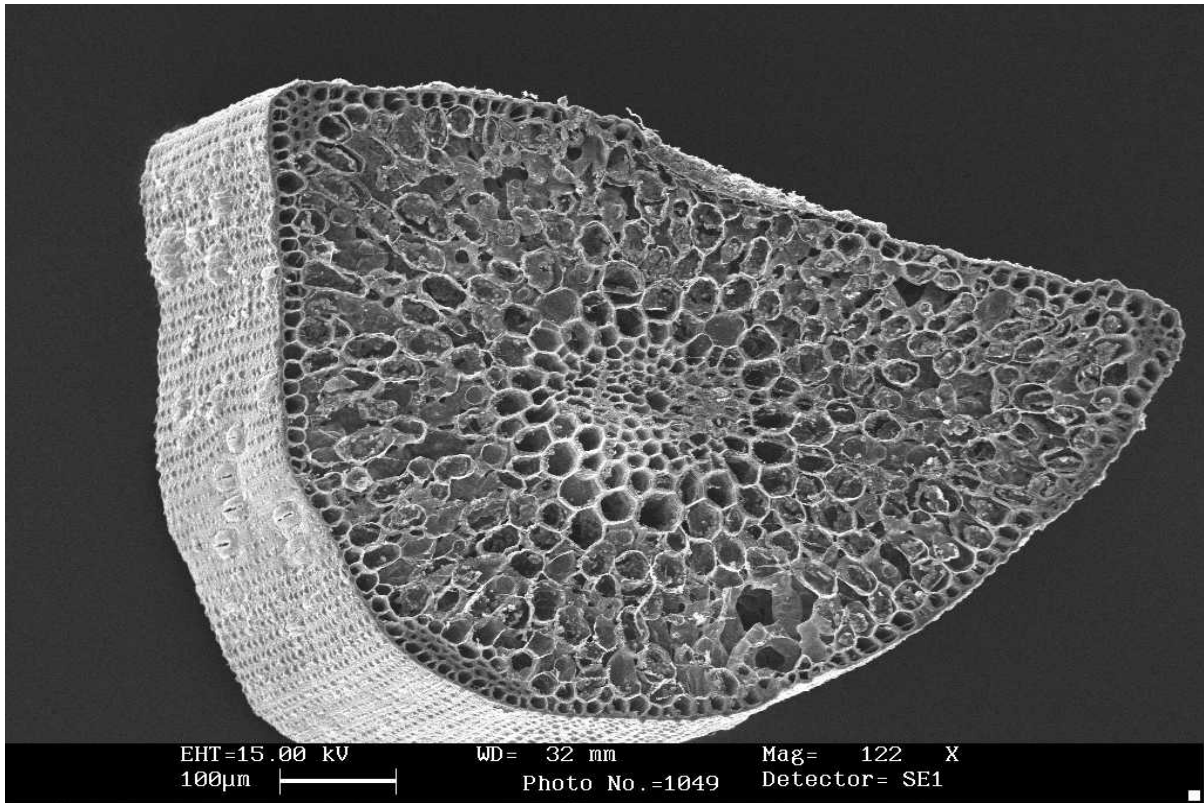
The following images are based on the work of Lytton John Musselman and W. Carl Taylor in South Africa.

Lytton John Musselman 25 January 2006

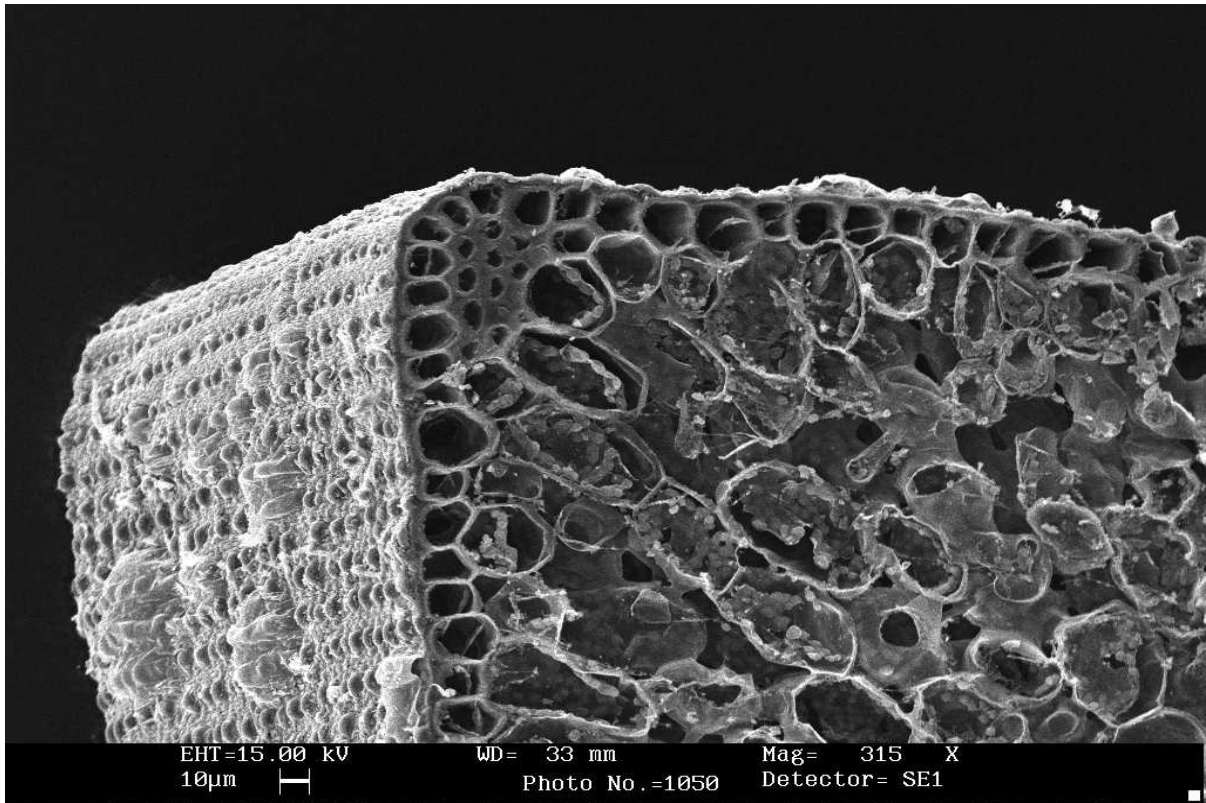
Isoetes stellenbossiensis Duthie



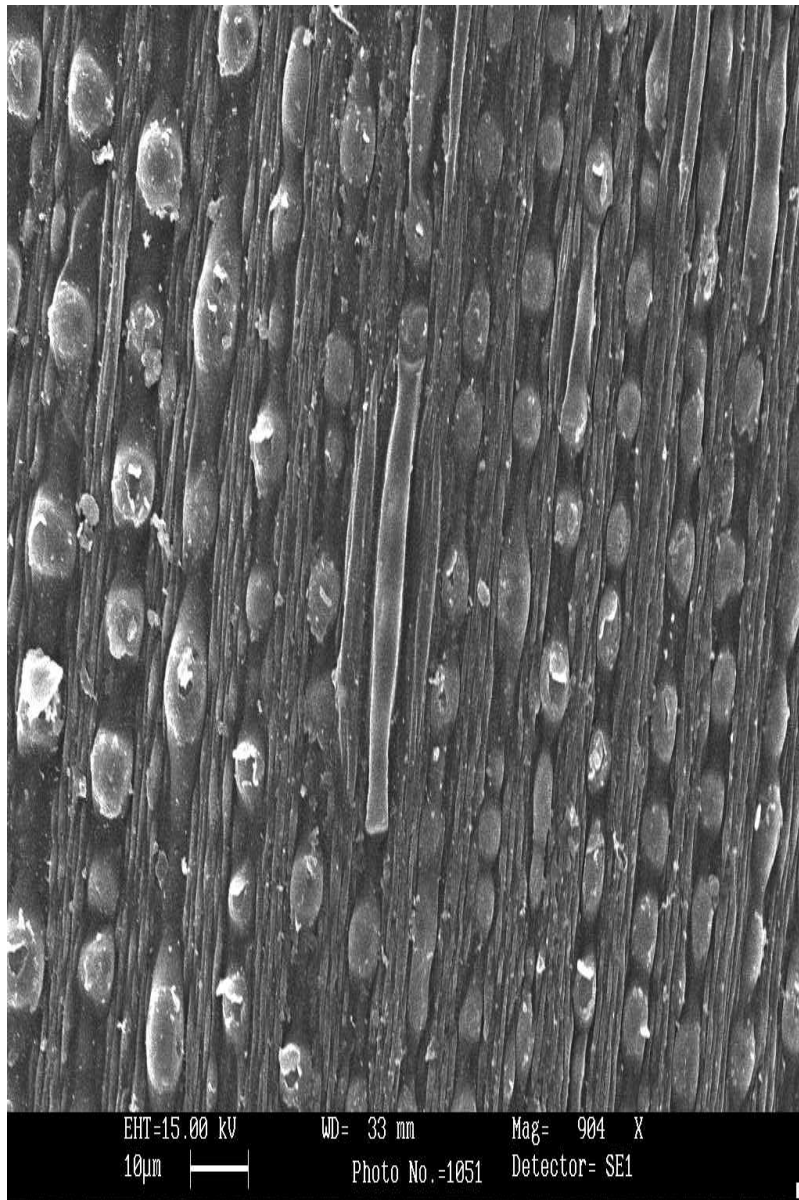
Spores from *Isoetes stellenbossiensis* Duthie. *Taylor & Musselman 6160*. Plants in vlei adjacent to brick yard; ca. 1.1 Km from stop light intersection; Koelenhof Vlei, Stellenbosch. 7 Oct 2000.



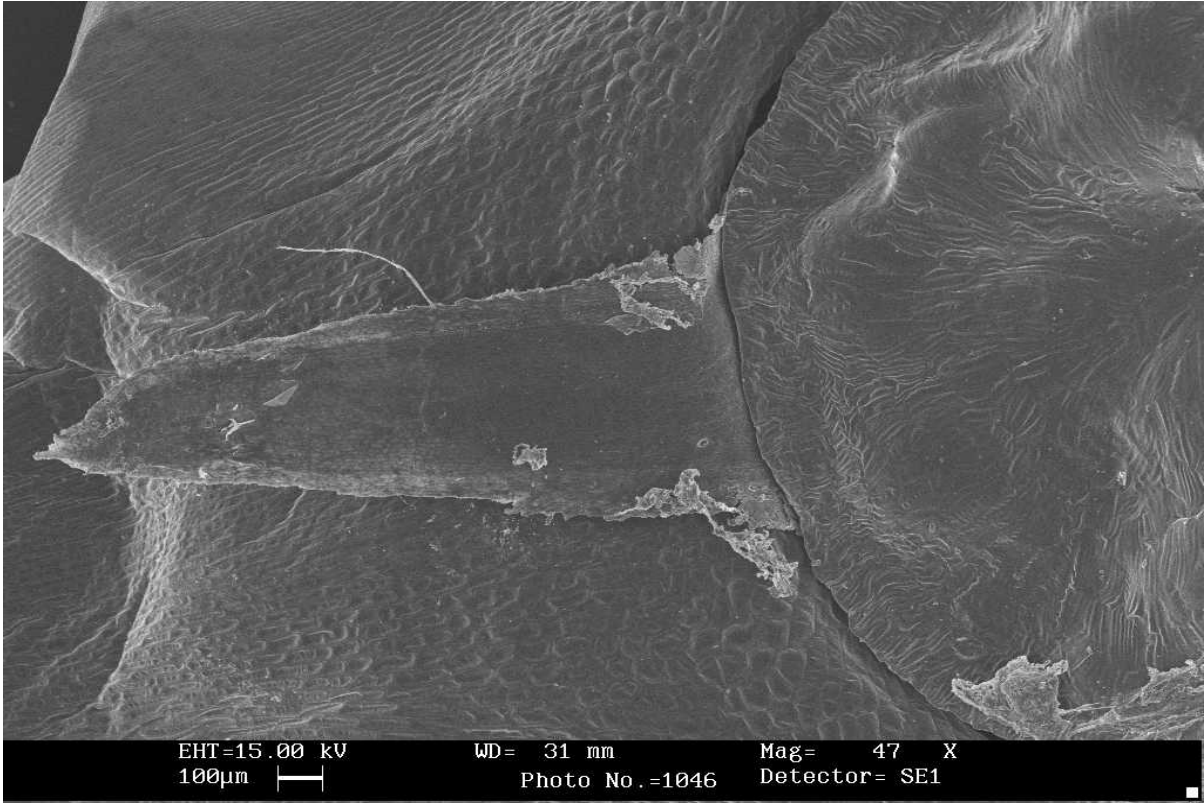
Cross section of leaf from *Isoetes stellenbossiensis* Duthie. Taylor & Musselman 6160. Plants in vlei adjacent to brick yard; ca. 1.1 Km from stop light intersection; Koelenhof Vlei, Stellenbosch. 7 Oct 2000. Note the lack of the typical four air chambers. Compare with collection 6157 below.



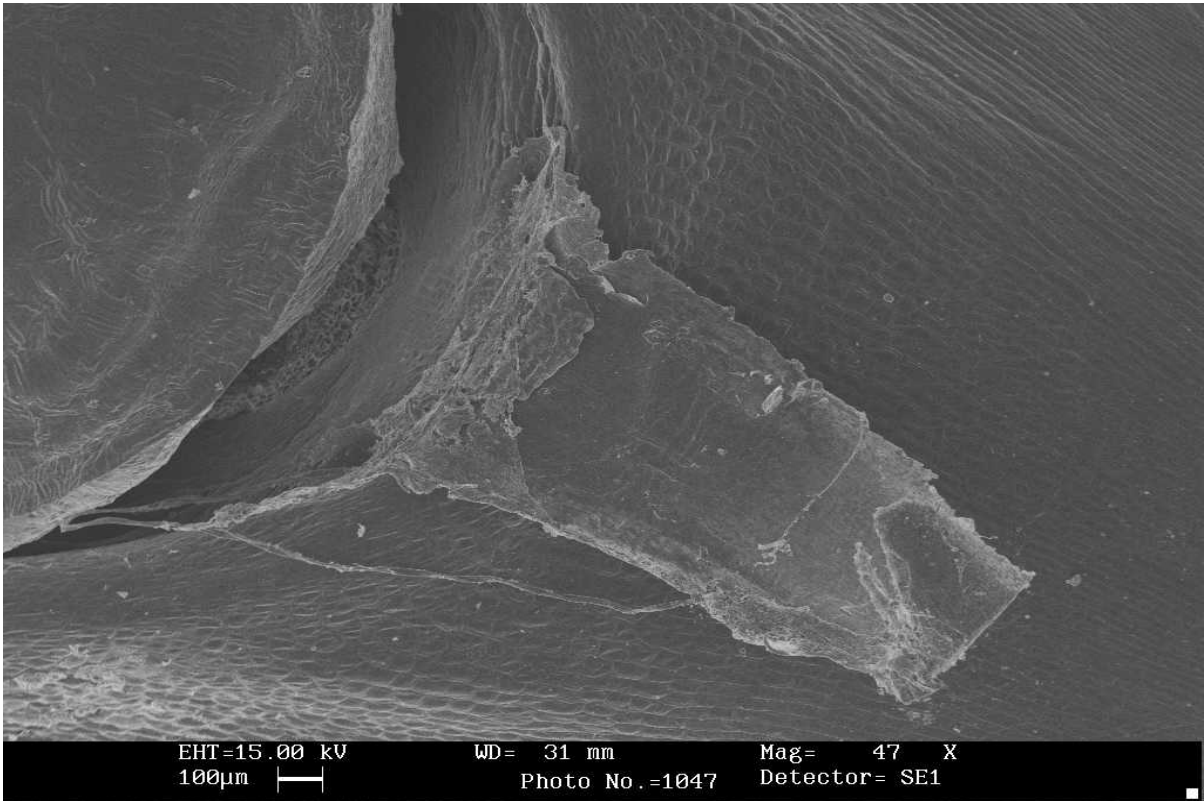
Peripheral strands of leaf from *Isoetes stellenbossiensis* Duthie. Taylor & Musselman 6160. Plants in vlei adjacent to brick yard; ca. 1.1 Km from stop light intersection; Koelenhof Vlei, Stellenbosch. 7 Oct 2000.



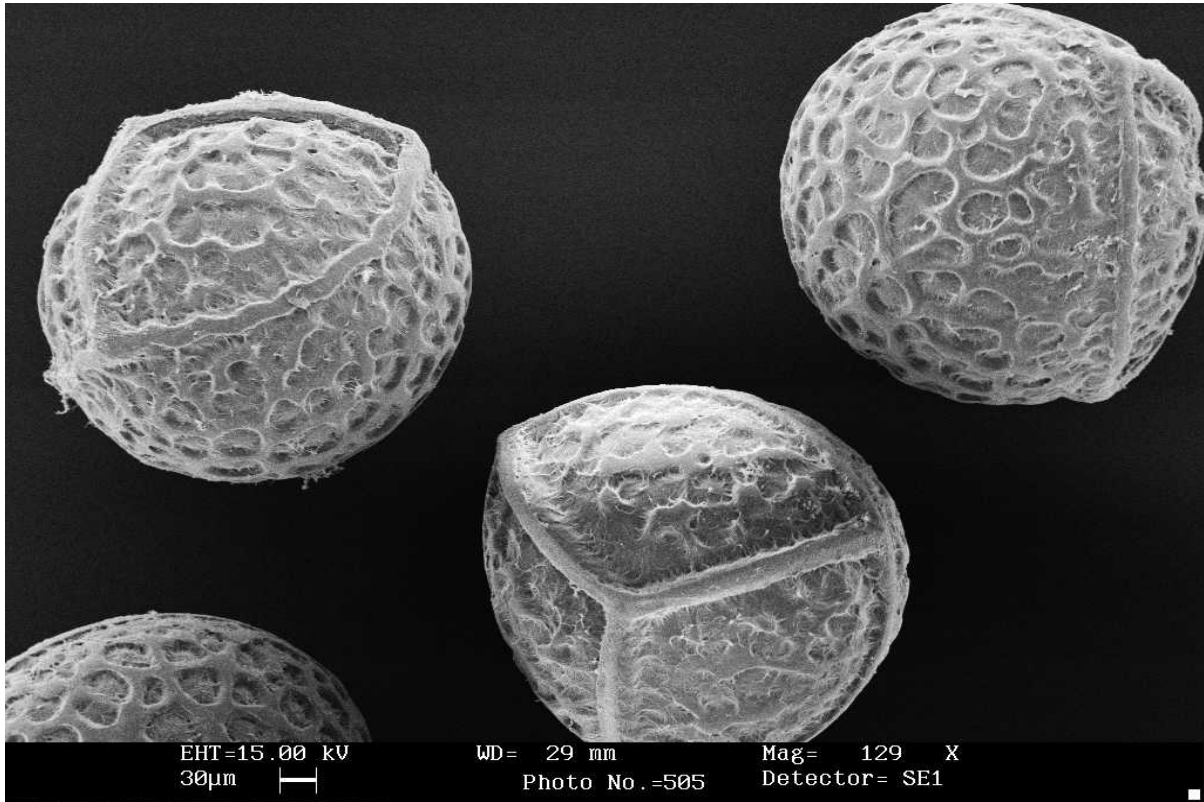
Surfaces of epidermal cells of leaf of *soetes stellenbossiensis* Duthie.Taylor & Musselman 6160. Plants in vlei adjacent to brick yard; ca. 1.1 Km from stop light intersection; Koelenhof Vlei, Stellenbosch. 7 Oct 2000.



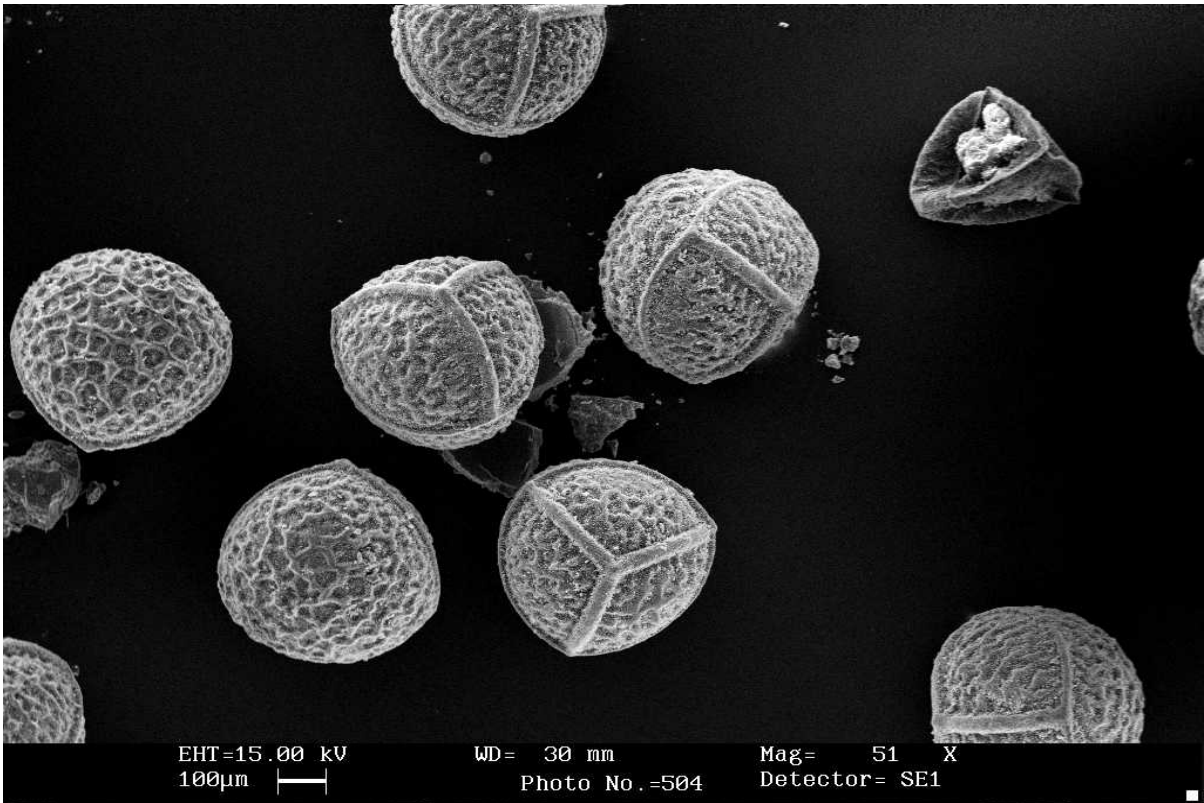
Labium of *Isoetes stellenbossiensis* Duthie. *Taylor & Musselman 6160*. Plants in vlei adjacent to brick yard; ca. 1.1 Km from stop light intersection; Koelenhof Vlei, Stellenbosch. 7 Oct 2000.



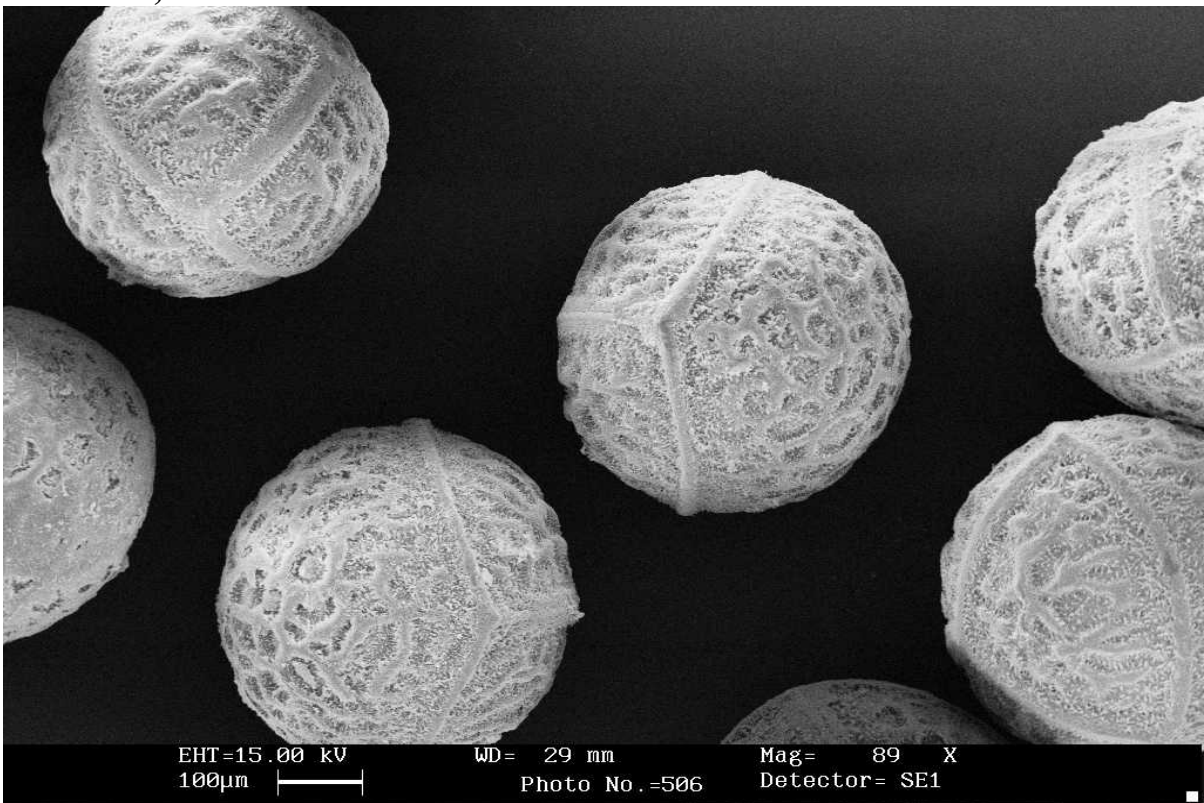
Labium of *Isoetes stellenbossiensis* Duthie. Taylor & Musselman 6160. Plants in vlei adjacent to brick yard; ca. 1.1 Km from stop light intersection; Koelenhof Vlei, Stellenbosch. 7 Oct 2000.



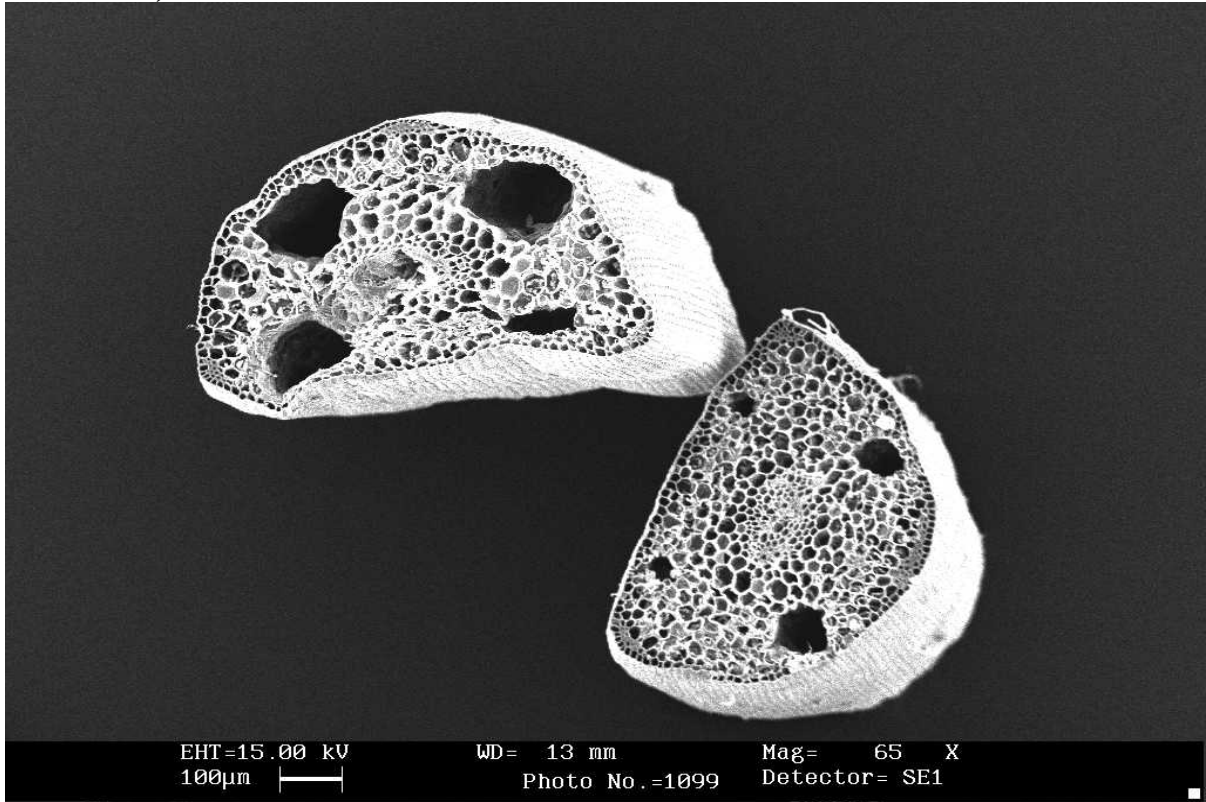
Megaspores of *Isoetes stellenbossiensis* Duthie. Roundebosch Commons, Capetown. Musselman, 99204



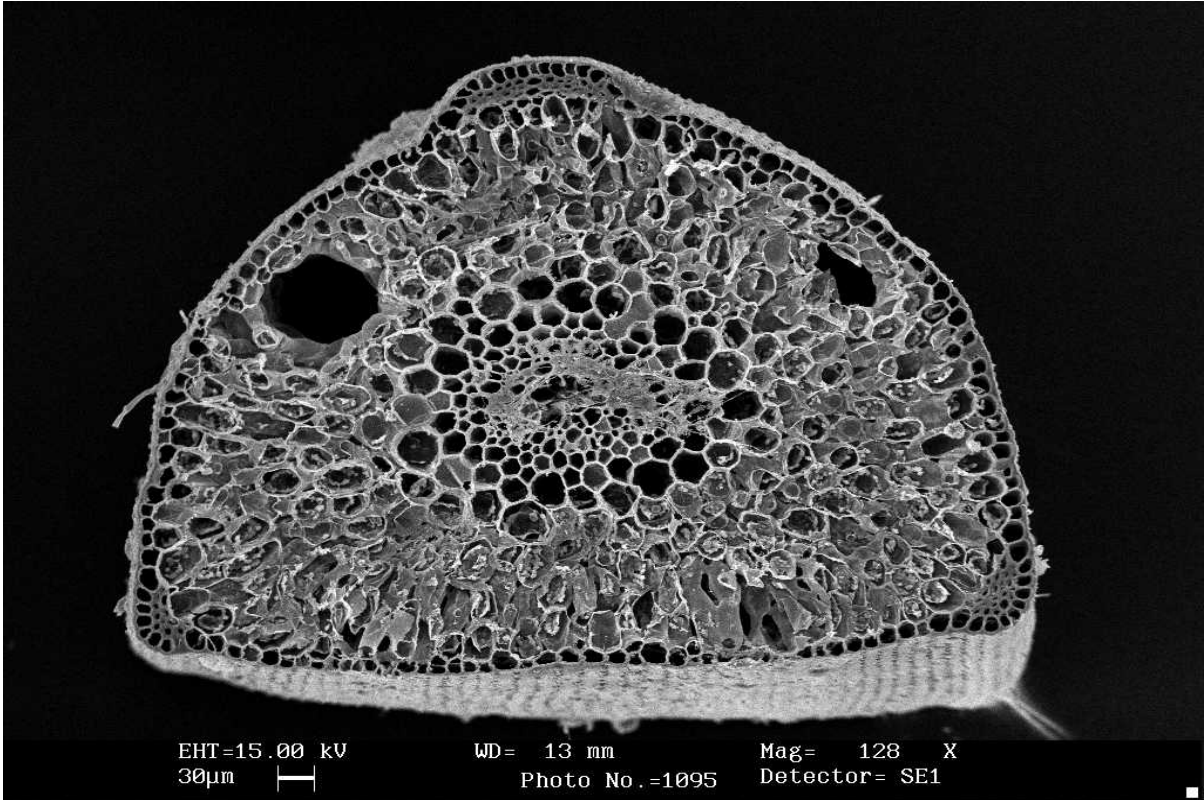
**Megaspores of *Isoetes stellenbossiensis* Duthie(?). Ecopreserve, Stellenbosch.
*Musselman, 99200***



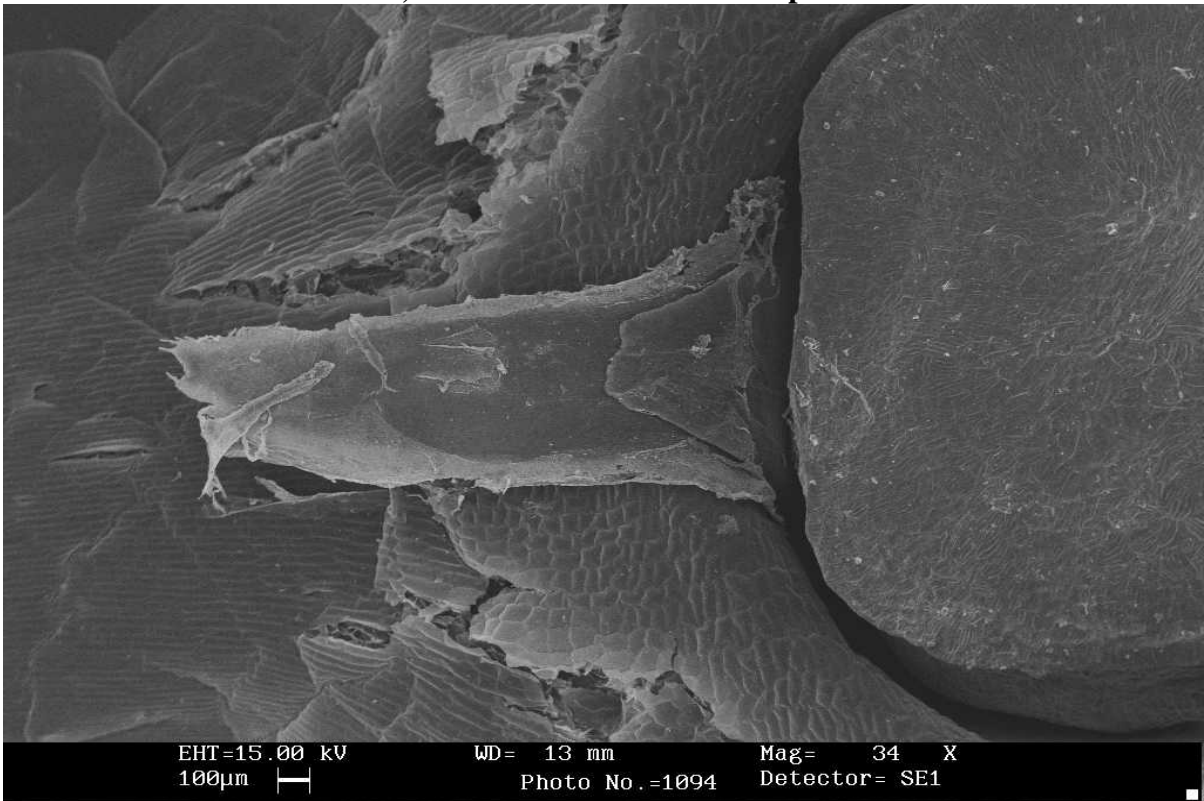
Megaspores of *Isoetes stellenbossiensis* Duthie(?). Koelenhof vlei, near Stellenbosch.
Musselman, 99203



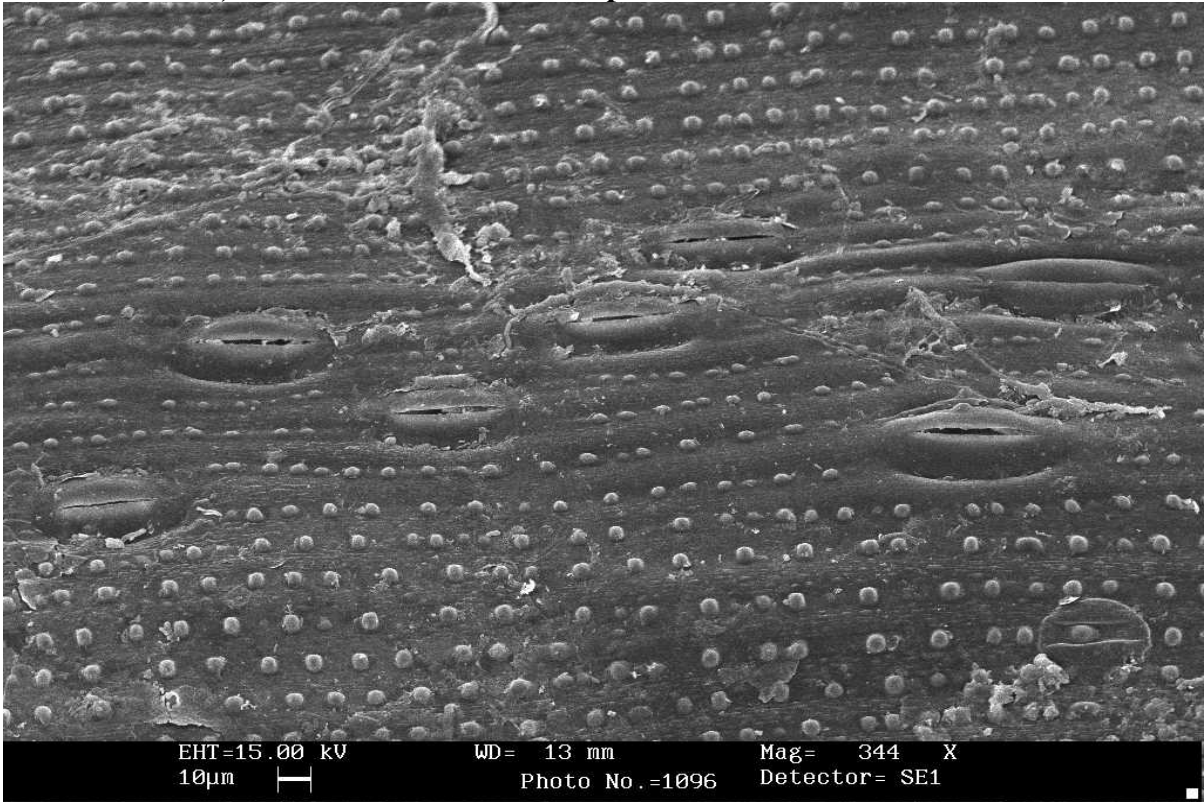
Leaves of *Isoetes stellebossiensis* Duthie. Cross section. *Taylor & Musselman with Roux 6157*. Plants scattered in vlei; Rondebosch Commons. Cape Town. 6 October 2000.



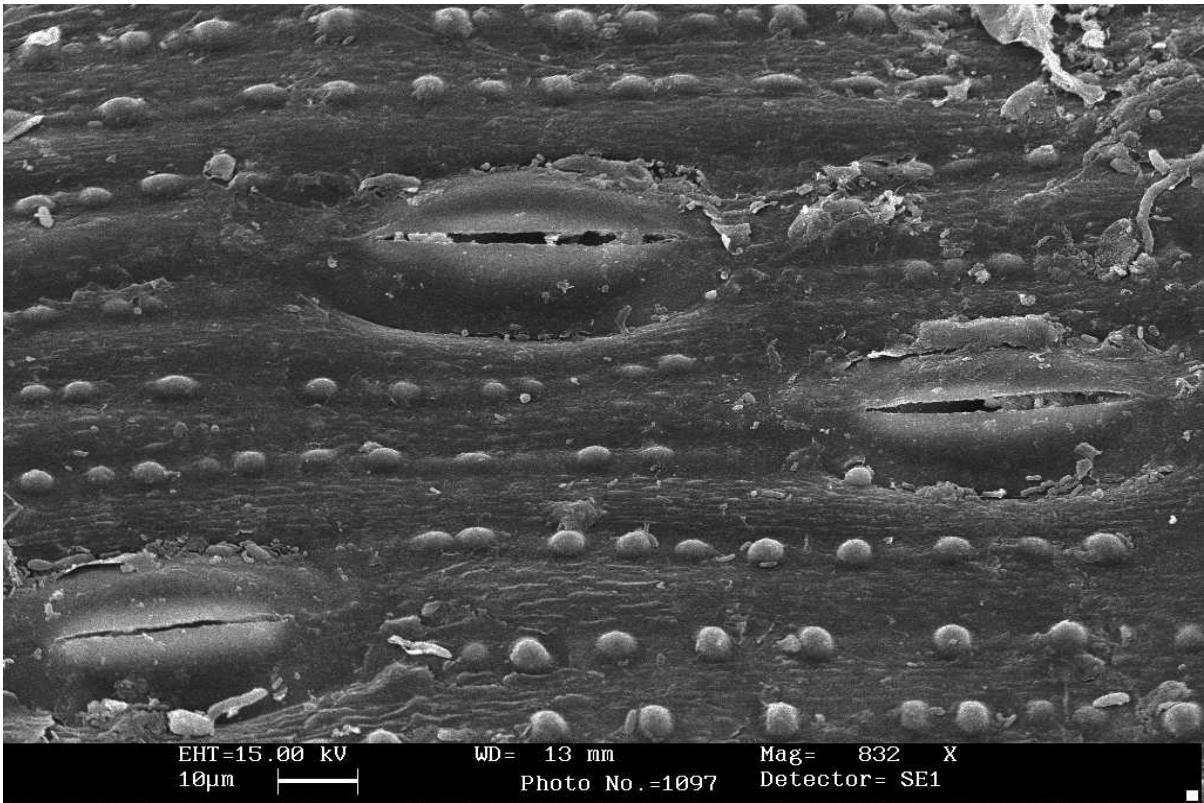
Leaf of *Isoetes stellebossiensis* Duthie. Cross section. Taylor & Musselman with Roux 6157 . Plants scattered in vlei; Rondebosch Commons. Cape Town.



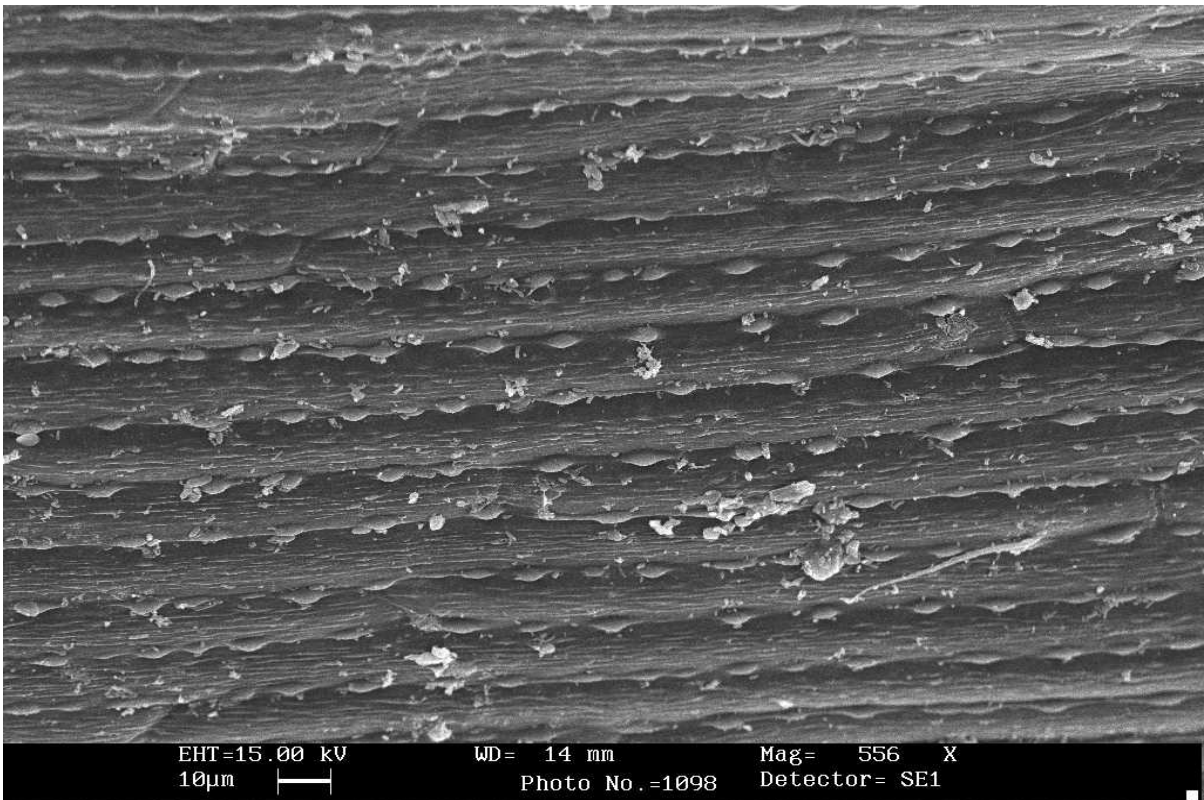
Ligule of *Isoetes stellebossiensis* Duthie. Taylor & Musselman with Roux 6157 . Plants scattered in vlei; Rondebosch Commons. Cape Town.



Stomata, adaxial leaf surface. *Isoetes stellebossiensis* Duthie. Taylor & Musselman with Roux 6157 . Plants scattered in vlei; Rondebosch Commons. Cape Town.

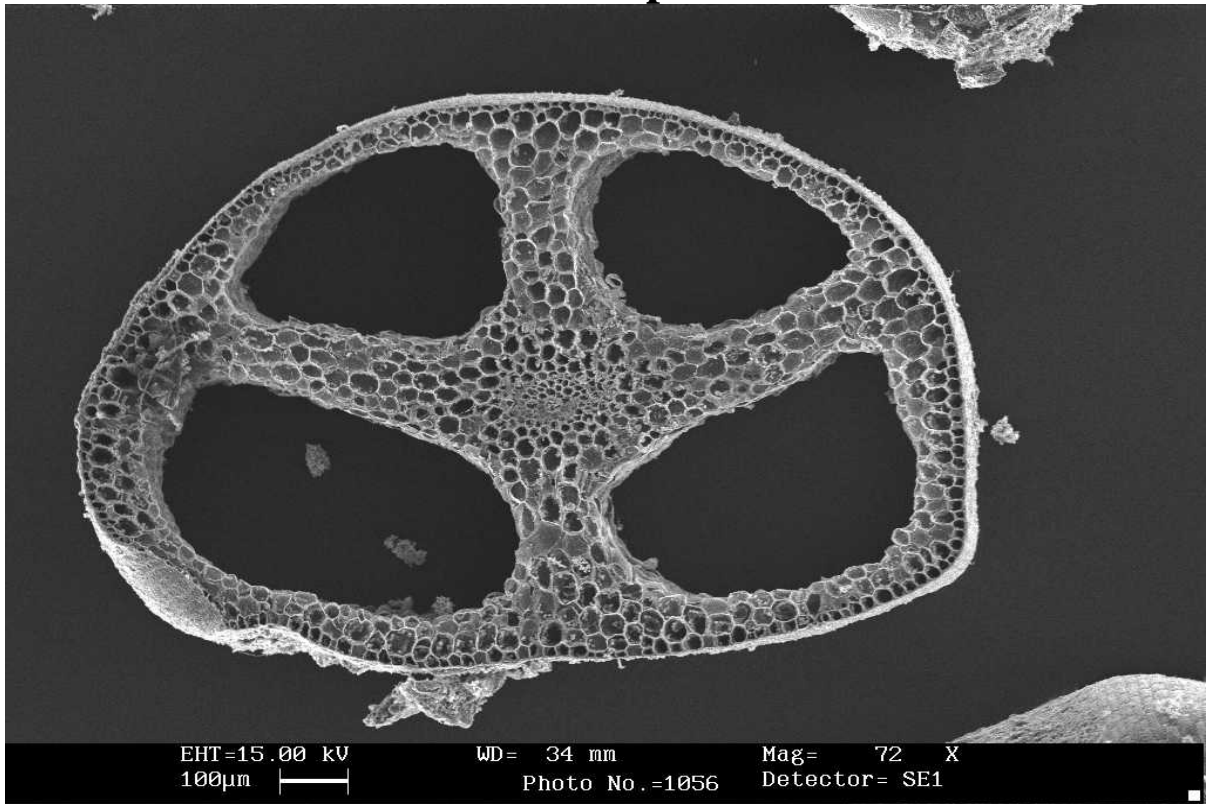


Closeup of stomata, adaxial leaf surface. *Isoetes stellebossiensis* Duthie, Taylor & Musselman with Roux 6157 . Plants scattered in vlei; Rondebosch Commons. Cape Town.

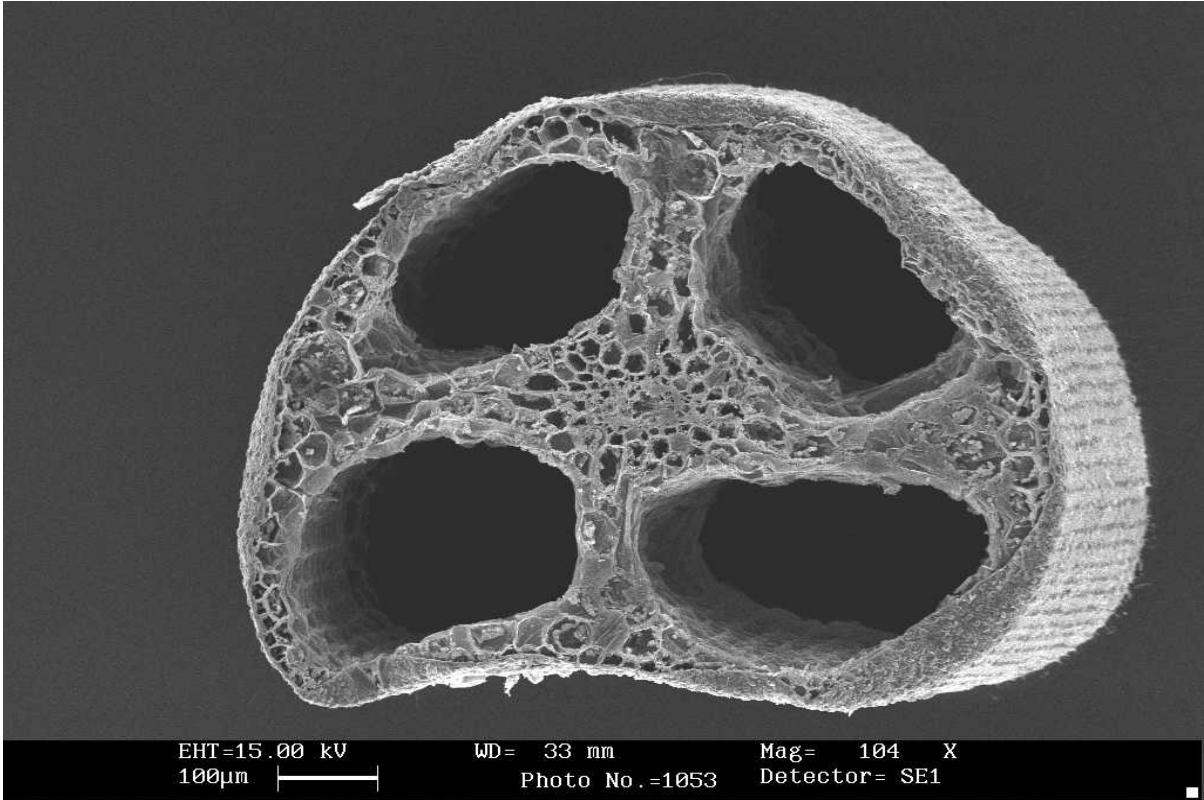


Abaxial leaf surface. *Isoetes stellebossiensis* Duthie. Taylor & Musselman with Roux 6157 . Plants scattered in vlei; Rondebosch Commons. Cape Town.

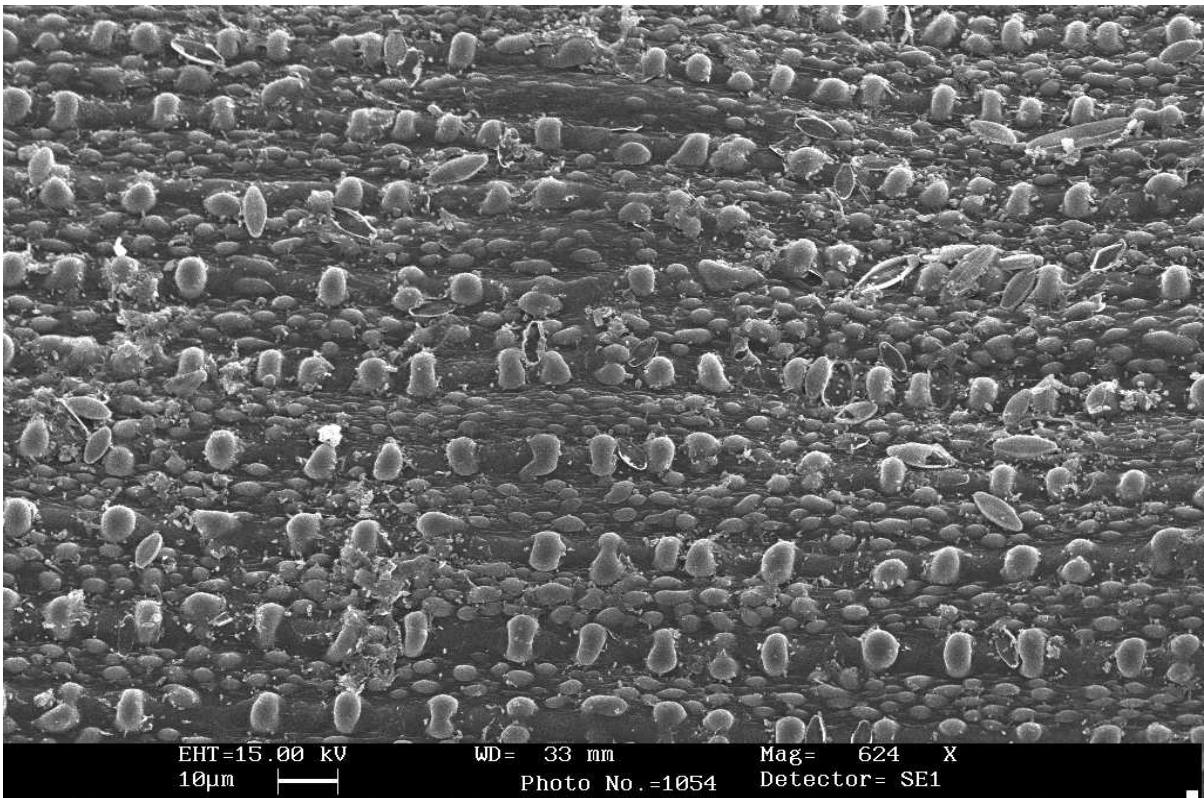
Isoetes sp.



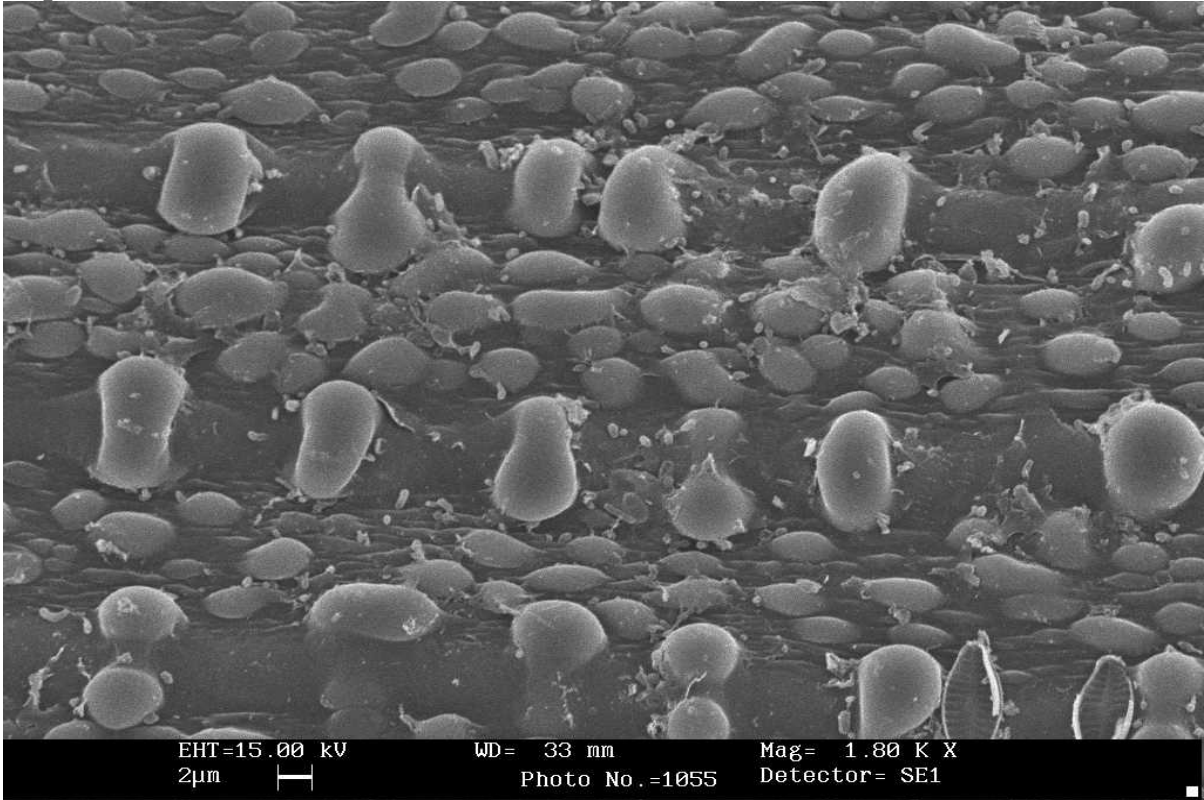
Cross section of leaf from rock outcrops. Taylor & Musselman 6158 (plants with long, slender leaves) and 6159 (plants with short, thick leaves). Plants in moist depressions on granitic outcrop; Platkip Outcrop, Stellenbosch. 7 Oct 2000. No peripheral strands are obvious.



Cross section of leaf of *Isoetes*. Taylor & Musselman with Roux 6158. Plants in drying depressions of vlei; Edith Stephens Isoetes Vlei Preserve, Cape Town. 6 Oct 2000.



Ornamentation of leaf epidermal surface of *Isoetes. Taylor & Musselman with Roux 6158*. Plants in drying depressions of vleis; Edith Stephens Isoetes Vlei Preserve, Cape Town. 6 Oct 2000. Some diatoms are present on surface of leaf.



Detail of leaf epidermal surface of of *Isoetes. Taylor & Musselman with Roux 6158*. Plants in drying depressions of vleis; Edith Stephens Isoetes Vlei Preserve, Cape Town. 6 Oct 2000. Some diatoms are present at lower right.