

Fireworks Lesson 1: Red Eye Removal

Macromedia Fireworks MX 2004 adds powerful new photo-retouching capabilities to reduce or eliminate the appearance of red-eye in photographs.

In some flash photographs of people and animals, the camera photographs the inside of the subject's eye, thereby making the pupil appear red. Fireworks enables you to repair such photographs by using the Red Eye Removal tool . This tool works like a paint brush that paints only over colors that have a red or reddish hue. The red hues are replaced with grays and blacks to make the subject's eyes appear more natural.

This lesson contains the following topics:

- [Open a document](#)
- [Zoom in](#)
- [Choose the Red Eye Removal tool](#)
- [Repair the photograph](#)

Open a document

To begin this lesson, open the lesson sample file.

- 1 Choose File > Open.
A dialog box appears.
- 2 Navigate to the folder where you downloaded the sample file and choose redeye.jpg.
- 3 Click Open.

The document appears.



This document contains a portrait of a baby monkey.

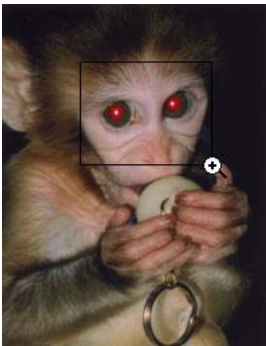
Zoom in

Only the eyes of the photograph require editing. You can use the *Zoom* tool to see the eyes in greater detail.

- 1 In the Tools panel (Window > Tools), click the Zoom tool.



- 2 Drag a rectangle around the eye area of the monkey's face.



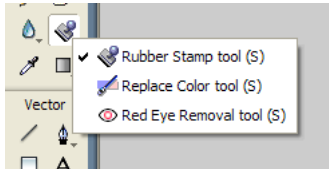
A closer view of the monkey's eyes appears.



Choose the Red Eye Removal tool

Now that you've selected the area in the photograph to work on, you need to select the Red Eye Removal tool to fix the red-eye effect. The Red Eye Removal tool is part of the image repair tool group, which also includes the Rubber Stamp and Replace Color tools.

Note: A small triangle in the lower right corner of a tool in the Tools panel indicates that the tool is part of a tool group.



- 1 In the Bitmap section of the Tools panel, choose the Rubber Stamp, Replace Color, or Red Eye Removal tool, and hold down the mouse button.

A pop-up menu appears with tool icons, tool names, and shortcut keys. The currently selected tool has a check mark to the left of the tool name.

- 2 Select the Red Eye Removal tool and release the mouse button.

The tool appears in the Tools panel, and the tool options appear in the Property inspector. Although the Red Eye Removal tool has several options in the Property inspector, you don't need to adjust the options for this lesson. For more information on the Red Eye Removal tool options, see *Fireworks Help*.

Repair the photograph

The Red Eye Removal tool paints only over colors with a distinctly red hue.

- 1 Drag the Red Eye Removal tool across the monkey's nose and release the mouse button.
No changes occur in the image. The Red Eye Removal tool makes it easy to avoid altering a photograph unintentionally.
- 2 Drag the Red Eye Removal tool across the monkey's eyes and release the mouse button.
The pupils change to a natural appearance.



- 3 You can return the image to its original size by selecting 100% from the magnification pop-up menu at the lower right corner of the Document window.
- 4 Save your changes (File > Save).

