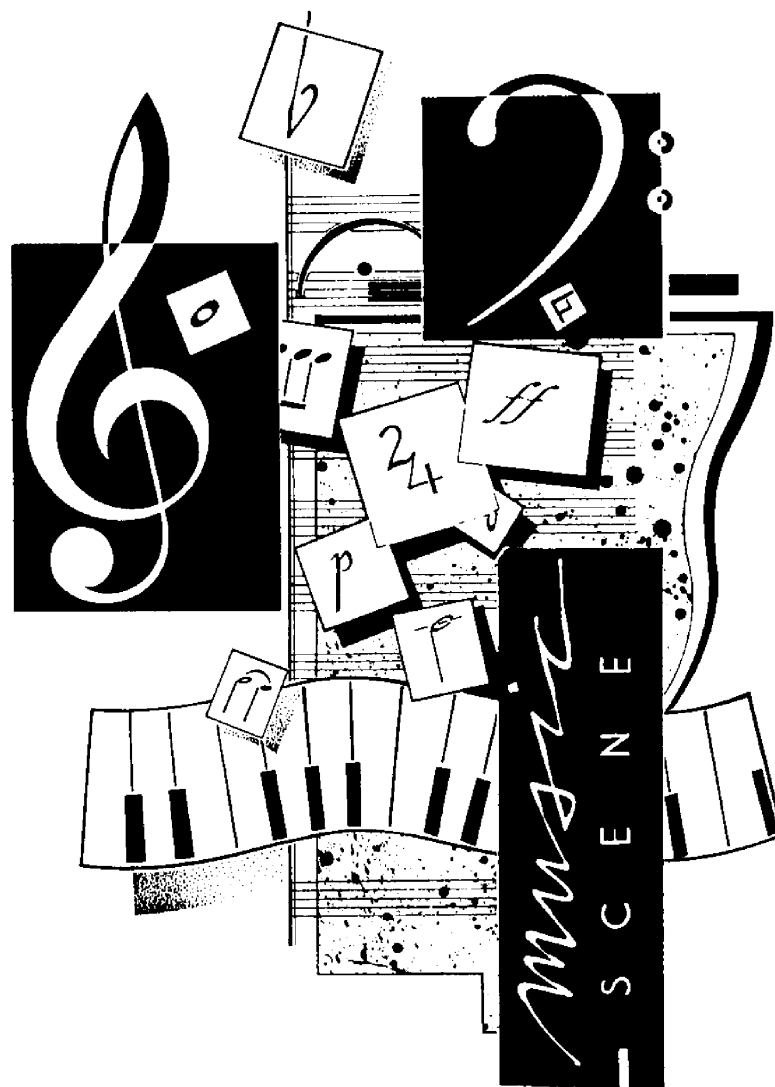


# Old Dominion University

♪ Department of Music



*Music Student Handbook*  
*Old Dominion University*  
*Department of Music*

# Music Student Handbook

School Year 2003-2004

Dennis J. Zeisler, Chairman  
Department of Music

## ♪ Forward

On behalf of the Music Department, I would like to take this opportunity to welcome you to Old Dominion University. This handbook will help you to become aware of the general policies of the department. Please read it carefully and follow its guidelines closely. The restrictions and requirements are intended to enable us to work smoothly together. They are necessary, and it is essential that you follow them.

Please make sure that you work closely with your departmental advisor to fulfill all degree requirements; however, if I can help you with a particular problem (presuming that I know the answer), please arrange an appointment to see me.

The faculty and I look forward to helping you with your education and your preparation for a career in music. Never lose sight of your personal career goals and always strive for excellence!

Sincerely,

Dennis J. Zeisler, Chair  
Music Department

## **♪ Department of Music Mission Statement**

“The academic mission of the Old Dominion University Music Department is to train capable, effective music teachers and performers and to guide the early education of students of music history, theory, composition and jazz. In addition, the department in compliance with university standards, requires that every music student be computer literate and familiar with the music technology. The department strives to be a center for musical resources for the communities served by the university. The music department has a serious commitment to the University General Education Curriculum.”

# Table of Contents

Forward . . . . .	iv
Mission Statement . . . . .	v
<b>Section One: Getting In . . . . .</b>	<b>3</b>
Applied Music Auditions . . . . .	3
Placement Examinations in Music . . . . .	5
Music Theory . . . . .	5
Ear Training . . . . .	6
Voice Class . . . . .	6
Piano Class . . . . .	6
Selecting a Course of Study . . . . .	7
<b>Section Two: Getting Around . . . . .</b>	<b>8</b>
Advising and Registration Procedure . . . . .	8
Music Student Organizations . . . . .	9
Diehn Composers Room . . . . .	10
Building Security and Access . . . . .	11
Diehn Fine and Performing Arts Center Hours . . . . .	11
Card Keys . . . . .	11
Student Use of Office Equipment . . . . .	12
Lockers . . . . .	12
Practice Rooms . . . . .	12
Bulletin Boards . . . . .	13
<b>Section Three: Getting Through . . . . .</b>	<b>14</b>
Applied Music Requirements . . . . .	14
Accompanist Policy . . . . .	14
Performance Sessions . . . . .	15
General Student Recitals . . . . .	15
Jury Examinations . . . . .	16
Ensemble Requirements . . . . .	17
Piano Requirements . . . . .	17
"Blue Cards" . . . . .	18
Recital Attendance Policy . . . . .	18
Concert Etiquette . . . . .	20
Usher Policy . . . . .	2

<b>Section Four: Getting Out</b> .....	22
The Recital .....	22
Recital Appearance Requirements .....	22
Recital Approvals .....	22
Submitting a Program .....	23
Scheduling the Recital .....	24
Piano Proficiency .....	25
Voice Proficiency .....	26
<b>Appendix</b> .....	27



# Section One: Getting In

## ♪ **Applied Music Auditions**

Acceptance into the Department of Music requires the successful completion of an audition. To arrange for an audition date and time, please call the Department of Music as early as possible. Auditions are approximately 15 minutes in length. Audition requirements are as follows:

### 🎤 *♪ Voice*

Applicants should be prepared to sing from memory two or three contrasting vocal selections from the classical genre, preferably with at least one selection in a foreign language. An accompanist will be provided, however, a request must be made at least one week in advance. In addition, copies of the music must accompany the request. Taped accompaniment is not permitted.

### 🎹 *♪ Piano and Organ*

Applicants should prepare two or three pieces. Contrast of styles is desirable, especially between pieces displaying finer technique and those requiring control of tone and pedal. Memory is desirable but not required. The student should also be prepared to demonstrate technique which has been studied (scales, arpeggios, chords, etc.). Scores for music performed should be brought to the audition.

### 🎷 *♪ Brass, Woodwind and Strings*

Students auditioning for placement should have the following material prepared:

- A technical display piece.
- A lyrical selection (slow, legato) to show control of phrasing and tone.
- Brass and Woodwinds:
  - Major scales, tongued and slurred.
  - Chromatic scales -- 2 octaves. No minor scales required.
  - There may be sight reading.
- Strings:
  - 2 -3 Octave scale of choice

### 🥁 *♪ Percussion*

The percussionist should be prepared to demonstrate ability on snare drum, timpani, or the mallet instruments. There should be two prepared pieces of different styles. For snare drum, a demonstration of basic rudiments is desirable. Any ability on the other instruments may be demonstrated by a prepared piece. Some sight reading is required.

## Guitar

Students who wish to study guitar should be prepared to demonstrate:

- An ability to read music.
- Knowledge of basic chords.  
I, IV, V, V<sup>7</sup> in all keys common to the guitar  
(i.e. C, G, D, A, E, F, and relative minors).
- Scales in the above keys
- Repertoire: A minimum of two pieces are required. One piece must be performed from memory. Pieces must be from the classic repertoire. Audition pieces must be on the level of a Carcassi study, any movement of a suite by J. S. Bach, a simple etude by Leo Brouwer, or a pavane by Luis Milan.

Based on the results of the audition, students would register for Applied Music classes according to the following:

MUSA 151, 152, 251, etc., are for music majors who are studying at the music performance level: 3 credits; one full-hour lesson per week.

MUSA 141, 142, 241, etc., are for music majors and music minors: 2 credits; one full-hour lesson per week.

MUSA 139, 140, 239, etc., are available to non-majors, or to music majors studying a secondary instrument: 1 credit; one half-hour lesson per week.

Teacher assignments in Applied Music are made by the Department Chair. When possible, a student's preference will be honored. However, a change of teacher is not ordinarily made, and must be approved by the Department Chair upon the recommendation of the student's present teacher.

No "cuts" are accepted in Applied Music courses. When a lesson must be missed, it is the student's responsibility to notify the teacher in advance. Students must take the initiative in arranging make-up lessons.

Students may not schedule non-department performances without departmental approval. In the Applied Music field, this may normally be cleared with the student's instructor.

Each student is expected to keep off-campus commitments within a limit that will allow ample time for University work, particularly in the area of Applied Music. It should be clearly understood that the necessity to work in order to pay expenses is not an excuse for failure to meet University commitments.

# ♪ Placement Examinations in Music

Students with previous study in music theory, ear training, voice class, or piano must take placement examinations in those areas in which they wish to receive credit. The requirements for successful completion of placement examinations are listed below.

## 👉 *Music Theory Placement Tests*

### **First Semester (MUSC 221):**

- Notation of pitch and time
- Staff, clefs (including C clefs), note values
- Construction and spelling of scales
- Key signatures
- Relative key relationships
- Forms of the minor scale
- Meter and rhythm
- Intervals: spelling, identification, consonant/dissonant, interval inversion
- Triads: construction, spelling, qualities in keys
- Part writing: 4 voices, root position only, primary triads

### **Second Semester (MUSC 222):**

- Non-harmonic tones
- Harmonic analysis
- Part writing: all triads, root position and inversions
- Dominant seventh chords
- Introduction to other seventh chords

### **Third Semester (MUSC 321):**

- Seventh chords
- Secondary dominants and secondary leading-tone chords
- Modulation to closely related keys
- Binary and ternary forms

### **Fourth Semester (MUSC 322):**

- Borrowed chords
- Neapolitan chords
- Augmented-sixth chords
- Modes
- Twelve-tone technique

## ***Ear Training Placement Tests***

### **First Semester (MUSC 223):**

Major melodies  
Rhythm in simple and compound meters (simple divisions of the beat only)  
Sight sing and notate major melodies in dictation with correct pitch and rhythm

### **Second Semester (MUSC 224):**

Minor mode - sing and spell any form of a minor scale  
Minor melodies  
Rhythm in simple and compound meters (subdivision of the beat)  
Sight sing and take down minor melodies in dictation with the correct pitch and rhythm

### **Third and Fourth Semesters (MUSC 323-324):**

Chromatic melodies and more difficult rhythms, both for singing and dictation  
Harmonic dictation exercises including primary and secondary triads and inversions

## ***Voice Class Placement Tests***

Appropriate credit for voice class is awarded based upon the results of a voice audition (see *Applied Music Auditions*). The student should make sure that the auditioning committee is aware of the student's intention to receive credit for voice class, as opposed to placement in Applied Music.

## ***Piano Class Placement Tests***

Piano placement examinations will only be heard during the first two weeks of each semester, and during the week of final exams. Students interested in piano class placement should see Mrs. Forman for specific information.

# ♪ **Selecting a Course of Study**

Music Majors are required to complete specific departmental and general education course work leading to one of the following degrees:

## 👉 🎵 ***Bachelor of Music (B.M.)***

**Performance:** Emphasis is on developing each individual's musicianship through applied music lessons and participation in a variety of ensembles along with a foundation in music theory and history. Concentrations are available in voice, piano, organ, orchestral instruments and guitar.

**Composition:** The development of analytical, compositional, and computer skills is based on a comprehensive study of the theoretical background of music from all periods and various cultures.

**Music Education:** Students completing this degree will be recommended for the appropriate license to teach music in the public schools. Concentrations are available in vocal or instrumental music for grades K-12. Certification from Old Dominion University is reciprocal in most other states.

## 👉 🎵 ***Bachelor of Arts (B.A.)***

**Music:** The Bachelor of Arts in Music allows students to specialize and diversify to three separate tracks within a broad liberal arts degree program. Students planning on graduate study in music theory or history should consider this program.

### **Interdisciplinary Studies:**

Interdisciplinary studies allow students to design specialized degree programs. A student may combine music with one or more academic areas to pursue unique educational goals. Programs may be designed in Music Business or Music Production.

Students may officially declare a major after the completion of ENGL 110C & 111C, as well as being accepted into the Department of Music. A student's advisor can enter the appropriate major during advising.

# Section Two: Getting Around

## ♪ Advising and Registration Procedure

All degree-status undergraduate students are required to have an academic or faculty advisor approve their courses of study prior to each registration. Advisors will make every effort to give effective guidance to students in academic matters and to refer students to those qualified to help them in other matters, but the final responsibility for meeting all academic requirements for a selected program rests with the student.

First-semester advising is available at Preview summer orientation for all incoming students. Preview is required for all incoming freshman students and is strongly encouraged for all incoming transfer students. A faculty member from the Department of Music will be available during Preview to advise incoming students. Students must be advised by the Department of Music during Preview.

Students cannot officially declare a major until certain University requirements are met. However, students who have not yet declared their major should **continue to be advised by the Department of Music**, even though the student's official file will still be with the Advising and Transfer Services office.

Each student is assigned a faculty advisor by the Chairman. A complete list of students and their advisors is posted on a bulletin board. Advisors are assigned for your benefit and should be consulted when you have questions about your music program at Old Dominion.

Students should meet with their advisors near the end of each semester to plan a course of study for the following semester. Students are not permitted to register for classes until their advisor's block is removed.

Students must complete an evaluation of their Applied Music teacher each semester. A copy of this form can be found in the Appendix. Student Evaluation of Faculty forms are completed over the Internet through your account in Leo Online.

# ♪ Music Student Organizations

## 👉 🎵 **AGO**

The student chapter of the **American Guild of Organists** is open to all students interested in organ and church music. The AGO is the national organization for musicians in the church music field. Dr. Kosnik, faculty sponsor.

## 👉 🎵 **MENC**

**Music Educators National Conference** is a voluntary, nonprofit organization representing all phases of music education in schools, colleges, universities, and teacher-education institutions. Active MENC membership is open to all persons engaged in educational work in music. Membership provides opportunities for professional orientation and development in music education activities as part of the Music Education curriculum. Dr. Klein, faculty sponsor.

## 👉 🎵 **ΦMA Sinfonia**

**Phi Mu Alpha Sinfonia** is a music fraternity. The Iota Tau Chapter at Old Dominion University was founded on November 5, 1960. The primary purpose of Sinfonia is to encourage and actively promote the highest standards of creativity, performance, education, and research in music in America. The Iota Tau Chapter conducts an extensive membership campaign at the beginning of each semester. Further information on the fraternity and its activities may be obtained from any member of Iota Tau Chapter. Musical talent, academic standing and personal attitudes are among attributes taken into consideration for membership. Mr. Zeisler and Dr. Teply are faculty sponsors.

## 👉 🎵 **ΣAI**

**Sigma Alpha Iota** is an internationally incorporated fraternity for women in the field of music. The purpose of the fraternity is to uphold the highest ideals of music, to give inspiration and material aid to its members, and to cooperate wholeheartedly with the ideals and aims of the Alma Mater. Membership, by invitation, is open to University graduate and undergraduate students in music and to the music faculty. Scholarship, musicianship, personality, and character are considerations for membership. Ms. Agnes Fuller is the faculty sponsor.

## 👉 🎵 **ΠΚΛ**

On April 13, 1994, the Eta Upsilon Chapter of **Pi Kappa Lambda** was chartered to Old Dominion University. Since the aim of the educative process is the stimulation of the student toward the highest level of achievement within his or her capabilities, outstanding accomplishment should be accorded particular recognition. In an attempt to provide such recognition, the Alumni Association of the School of Music at Northwestern University in 1916 appointed a committee to consider the feasibility of installing an honor society in the field of music. As a result of the committee's labors, Pi Kappa Lambda was granted a charter by the State of Illinois in 1918. The first member was Peter Christian Lutkin, Dean of the School of Music at Northwestern University. His initials in their Greek equivalents were selected for the name of the society: *Pi Kappa Lambda*. Election to membership in Pi Kappa Lambda has been indicative of superior attainment in music, together with the personal qualifications pertaining to an outstanding exponent of the art.

## 👉 🎵 **ASTA**

The **American String Teachers Association** promotes excellence in string and orchestral teaching and playing. The ODU student chapter was founded in October, 2002. Music students who plan to teach strings privately in the classroom are encouraged to join.

# ♪ Diehn Composers Room

There are approximately 30,000 recordings in the Listening Library, which is located in the Diehn Composers Room of the Diehn Fine and Performing Arts Building. The Listening Library also houses a selection of music reference materials as well as many scores.

The University Library houses books on a wide variety of musical topics. The Reference Department contains the most current music reference materials, such as the New Grove dictionaries. Music periodicals are located on the second floor of the University Library.

## 👉 🎵 **Diehn Composers Room Regular Hours:**

Monday-Thursday:	8:00am- 9:00pm
Friday:	8:00am -5:00pm
Saturday:	1:00pm -5:00pm
Sunday:	1:00pm -6:00pm

Summer hours are as posted.

## 👉 🎵 **Diehn Composers Room Policies**

The Diehn Composers Room has sound recordings, that do not circulate, and reference materials. Staff members on duty assist patrons in locating materials and retrieve items for patrons. Music scores are on open shelves. A valid Old Dominion University identification card or Old Dominion University library card is required to use DCR materials or equipment. Smoking, food, and drinks are not allowed in the Diehn Composers Room or the University Library. The recording of copyrighted materials for patrons is strictly prohibited according to copyright law.

## 👉 🎵 **Equipment in the Diehn Composers Room**

Two listening modules and four self-service stations are available in the Diehn Composers Room. One video and multi-media station is also available.

The Diehn Composers Room currently owns compact disc players, cassette decks, turntables, a reel-to-reel deck, a VCR, an interactive compact disc drive, a 78rpm turntable, and a laserdisc player. In addition, computers are available and are networked. DCR staff will instruct patrons in the use of this equipment.

# ♪ Building Security and Access

The music department owns a great deal of expensive instruments, stereo equipment, recording equipment, and computers. Therefore, the need for building security is a great one. **Students are not permitted in the building at any time outside of normal building hours.** Students remaining in the building after hours will be asked to leave by University Police. Your cooperation in this matter is essential.

👉 **Diehn Fine and Performing Arts Center Hours:**

Monday - Thursday:	7:00 am - 10:00 pm
Friday:	7:00 am - 6:00 pm
Saturday:	9:00 am - 7:00 pm
Sunday:	12:00 pm - 6:00 pm

No one is permitted to use University facilities for the purpose of teaching without the express permission of the Department chairman.

In addition, student access is restricted in certain areas of the building. **Students are not permitted in restricted areas without proper authorization.** These areas include, but are not limited to:

- Electronic Music Studio (211)
- Computer/ Piano Lab (241)
- Chandler Recital Hall (128), including all backstage areas
- Faculty Work Room (248)

Access to certain areas is controlled through the use of a computerized card key system. Card Keys may be obtained from the music office at a cost of \$15, and are reusable from semester to semester. These card keys are required to be purchased for certain classes. You will be instructed on how to use the card key system when you receive your key. In the event of a card key malfunction, see Patti Casper in Room 247.

Once deactivated, a card key may be transferred to another student if approved by the Music Office. Please see Patti Casper in Room 247 for more information.

## ♪ **Student Use of Office Equipment**

Students may not use the Department's photocopier for any reason. A photocopier is available in the Art Library for student use. The Art Library is located on the first floor of the Fine and Performing Arts Center. The Monarch Copy Center, located next to the University Bookstore in Webb Center, also has photocopiers available to students.

Faculty members will not copy music for applied students; such copying is illegal and will discourage students from building their private libraries.

## ♪ **Lockers**

Students who wish to have a locker must sign up in the Main Office. Lockers are available to music majors on a first-come, first-served basis; although large lockers are reserved for students with large instruments. Lockers are a privilege. They must be emptied at the end of each school year. Any locks remaining will be removed during the summer. Anything in the locker will be discarded.

## ♪ **Practice Rooms**

Students may practice in the Wenger practice modules. Unless posted otherwise, music majors have priority over others in the modules. Two modules are reserved for the use of Governor's School in the afternoon; these will be clearly marked by a sign on the door.

If problems concerning the malfunctioning of instruments or the use of practice rooms arise, consult the department secretary.

Students may only practice in the building during normal building hours.

No smoking or consumption of food or beverages is allowed in the practice rooms or classrooms. No food or drink should ever be placed on the pianos. Violation of this rule will lead to withdrawal of practice privileges.

## ♪ **Bulletin Boards**

Notices for music students are posted on the Department of Music bulletin boards. Students should check these daily.

One bulletin board is designated as "open"; students and others may freely post and remove items on this board only. One bulletin board is reserved for the use of the Governor's School for the Arts. A third bulletin board serves as a "Message Center" for students and the Department.

All other bulletin boards are designated for official Department of Music use only. Official department use includes: class information, departmental and area music performances, music student organizations, graduate program and summer music festival information from other institutions, official notices from the department office, and other items considered to be of interest and approved by the faculty and/or office staff.

Certain bulletin boards are designated specifically for information pertaining to Blue Cards, Juries, GSRs, Recital Approvals, Voice Information, Advising and the Exit Exam.

**Unauthorized postings on any board will be promptly removed.**

## ♪ Phone Calls

Students may not use the telephone in the main office. Pay phones are located on the first floor beside the elevator. A free courtesy phone is located in the front lobby of Webb Center.

Because of limited resources, the music office will only take messages for a true emergency. Emergencies are sick children, death in the family, house on fire, etc. Other calls will be deemed emergencies by Mr. Zeisler or Mrs. Casper. (Emergencies are not grocery lists or picking someone up.)

# Section Three: Getting Through

## ♪ Applied Music Requirements

### 👉 🎵 *Accompanist Policy*

The Department of Music does not provide free accompanists for student recitals, juries, or sessions.

Students needing accompanists may either collaborate with students studying keyboard at Old Dominion, or may negotiate a fee with an accompanist from the Department's Approved Accompanist List, found in the Appendix. Failure to abide by this regulation will result in an Applied Music grade of F for the semester.

Students needing accompanists may not negotiate directly with Department keyboard students. Requests for student accompanists should be made through the student's Applied Music instructor, who in turn should contact the Keyboard section head.

Students working with accompanists from the Department's Approved list will not be allowed to perform in a session, general student recital, jury, or a recital approval unless the approved accompanist has the music no less than **3** weeks in advance. In addition, the student must arrange at least **2** coaching sessions with their applied teacher and accompanist.

**Voice:** Accompanists are required for all lessons, juries, and performances. Accompanists must have your music at least 3 weeks in advance of a performance or jury; see your teacher for more specific guidelines.

**Instrument:** Accompanists are required for all juries and performances.

**Keyboard:** All keyboard students are expected to accompany at least once a semester on a GSR, session or jury after they have attained the Applied Music numbering of 241 and above, and after they have studied keyboard at Old Dominion for a minimum of one semester. Assignments will be made only through the student's respective applied teacher. Students needing accompanists may not negotiate directly with department keyboard students.

## *Performance Sessions*

Each student in Applied Music numbering 241 who has studied at Old Dominion for at least one year must present a solo or sonata-texture composition at least once each semester at an appropriate performance session. Performance sessions for each area (voice, instrumental, keyboard) are scheduled each semester by the teachers in that area. All students should keep Mondays and Wednesdays at 4:00, as well as Tuesdays and Thursdays at 12:30, free for sessions. Failure to meet a session requirement will result in the grade of **F** for the semester.

**Voice:** Repertoire will be decided by individual teachers. Freshmen may be required to perform on a session; check with your individual teacher. Memory, while not required, is strongly encouraged for all students.

All voice students are required to attend all voice sessions. Non-attendance can affect your Applied Music grade.

**Instrument:** No additional requirements.

**Keyboard:** Students who have reached a numbering of 152 and above or 241 and above, who are in at least their second semester of study at Old Dominion, are required to appear on a keyboard session at least once each semester.

## *General Student Recitals*

Each student in Applied Music numbering 251 who has studied at Old Dominion for at least one year must present a solo or sonata-texture composition at least once each semester on a General Student Recital. A limited number of General Student Recitals ("GSRs") will be held each semester. All students are urged to attend all of these recitals.

Forms for submitting GSR program information are available in the Music Office. These must be completed, signed by the student's teacher, and returned to the office before the posted deadline. **If the form is not turned in before the deadline, the student will not be allowed to perform on the GSR.** Failure to meet a GSR requirement will result in the grade of F for the semester.

**Voice:** Your teacher may require approval of your program before the posted deadline. Memory, while not required, is strongly encouraged for all students.

**Instrument:** No additional requirements.

**Keyboard:** Memory is required.

## *Jury Examinations*

Jury examinations in Applied Music are given each semester to all students, except those in their first semester of Applied study at Old Dominion. Students auditing Applied Music take juries in the first semester in which they are enrolled for credit. Audit status is normally allowed for one semester only and is granted on the auditioning committee's recommendation that the student will likely be ready for credit study after one semester of audit study. A student with audit status will audition for credit study during juries at the close of the audit semester.

Students are not required to perform in a jury in any semester that they perform in a recital approval or a recital.

Students in Applied Music 651-652 numbering will perform a jury before the full music faculty in any semester in which those students do not play recitals.

**Voice:** Repertoire will be two selections assigned by the teacher. Memory is **required**; no music scores are allowed to be used by the singer. Use of scores will result in the grade of F for the semester. Sight reading may be required.

**Instrument:** Scales and arpeggios (selected from the student's current repertoire (jury) sheet) will be required. Repertoire will be two accompanied selections in contrasting styles or periods. One of these selections must be from memory unless a piece was performed from memory in a recital or session during the semester. An unaccompanied etude may be substituted for one of the solos. Sight reading is optional; individual teachers must bring sight-reading material to the jury if desired. Adjunct teachers are required to be at the jury of his/her students.

**Keyboard:** Students should be prepared to demonstrate appropriate technique. A minimum of two contrasting pieces/movements will be heard; at least one selection must be from memory. Sight reading may be required.

## ♪ Ensemble Requirements

Each degree program has specific ensemble requirements. Please consult the University Catalogue and your advisor if there are questions.

For the purposes of fulfilling **large** ensemble requirements, students may use only Concert Band, Wind Ensemble, Symphony Orchestra, or Concert Choir.

For the purposes of fulfilling **small** ensemble requirements, students may use only Madrigal Singers, Jazz Ensemble, Brass Ensemble, Percussion Ensemble, Guitar Ensemble, Collegium Musicum, String Ensemble, Woodwind Ensemble, Opera Workshop, or Piano Ensemble.

Numerous other ensembles are offered for credit, including Tuba-Euphonium Ensemble, Pep Band, Woodwind Quintet, Brass Quintet, String Quartet, Saxophone Quartet, Barbershop Quartet, and other vocal chamber ensembles. These ensembles are put together when instrumentation allows, and each group is coached by a faculty member. Students should be aware of the necessity for ensemble diversity, and are encouraged to participate in as many different ensembles as their schedules and advisors will allow.

**Students in the Bachelor of Music in Music Education program will be required to participate in five semesters of large ensemble and two semesters of small ensemble. Woodwind, Brass, and Percussion majors will elect Band as their large ensemble; String majors will elect Orchestra; Keyboard and Voice majors will elect Concert Choir.**

**Students in the Bachelor of Music in Performance program, with the exception of Keyboard majors, will be required to participate in four semesters of large ensemble and four semesters of small ensemble. Keyboard majors will have a six semester requirement, two of which must be in large ensemble and two must be in small ensemble.**

**Students in the Bachelor of Music in Composition program will be required to participate in three semesters of large ensemble and two semesters of small ensemble.**

Students are expected to be prompt and regular in their attendance at rehearsals.

## ♪ Piano Requirements

All courses of study leading to the Bachelor of Music degree have specific piano requirements. Unless otherwise specified by the students' curriculum sheet, students may fulfill piano requirements by taking MUSC 101-106 courses (piano class), enrolling in Applied Music courses at the half-hour, hour, or performance level, or by attempting to receive Advanced Placement credit. Students seeking Advanced Placement credit should refer to the *Piano Placement* section of the Handbook.

# ♪ "Blue Cards"

## 👉 🎵 *Recital Attendance Policy*

Students, as part of their degree programs, are required to attend the following number of recitals:

Full Time Students	12 or more credit hours per semester	<b>10 recitals/concerts per semester,</b>
Part Time Students	Less than 12 credit hours per semester	<b>5 recitals/concerts per semester,</b>
All Minors		<b>3 recitals/concerts per semester,</b>

Students will be required to attend, minimally, for the number of semesters listed below:

Class Standing	Minimum Semester Requirements
Freshman	6 semesters
Sophomore	4 semesters
Junior	2 semesters
Senior	No requirements
Transfer	Based upon number of semesters needed for graduation.

Class standing will be determined by the Department Chair, and will normally be based on applied-music numbering and the projected semester of graduation.

Records are kept through a system using attendance cards: each student obtains a recital-attendance card ("Blue Card") at the beginning of a performance, signs it, and returns it to a designated student at the end of the performance. **Those who arrive late or leave before an event's close will not receive attendance credit.**

Students will not receive recital attendance credit for each program in which they perform. (Multiple performances of the same program count as one "blue card".) There are also off-campus opportunities such as The Virginia Symphony, the Virginia Opera, and select performances specified by the Department.

A record of recital attendance will be kept in the Music Office. Students can make up deficiencies in any subsequent semester but must make up deficiencies before being allowed to graduate. Deficiencies can be made up only by attendance at programs.

Listening to tapes to make up deficiencies is not acceptable. The Department encourages attendance at recitals beyond the required number.

The following may be used to fulfill recital attendance requirements:

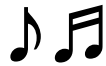
- All student and faculty recitals, including General Student Recitals
- Concerts by performing organizations of the Department of Music
- Special recitals and programs sponsored by the Department of Music
- Master Classes
- Virginia Symphony
- Virginia Opera

(Performance sessions and studio classes do count toward recital appearance requirements).

*(ask faculty)*

A list of Department sponsored events is posted on the bulletin board outside of the student lounge.

**Voice:** Students are required to attend all faculty recitals, voice sessions, studio classes, and voice master classes. Non-attendance will effect your Applied Music grade.



## *♩* **Concert Etiquette**

Students are expected to display proper etiquette when attending recitals and concerts:

- Arrive a few minutes early, so that you have adequate time to find a seat.
- If you happen to arrive late, do not enter the hall while someone is performing. Instead, wait outside until the end of a composition (at the very least, the end of a longer movement), then enter as quietly and quickly as possible. A good indication that it is alright to enter would be audience applause. Sit in the rear, to avoid disturbing many people.
- During the recital, give the performer your full attention. Whispering, doing homework, or reading anything except the program is disrespectful to the musicians on the stage. Of course, food and drink are absolutely prohibited inside the hall. Cell phones and pagers should be turned off.
- When to applaud:
  - Entrance of recitalist or conductor to the stage
  - End of a composition (instrumental) or a longer work (vocal)
  - End of a "set" of short compositions by the same composer or in the same language (usually vocal)
  - After a solo section within a composition (jazz only)
- When **not** to applaud:
  - After each movement of a multi-movement work
  - After each short song in a "set" (vocal)
  - Anytime the conductor's arms or the recitalist's instrument is still raised.
- Strive to set a positive example for those around you, especially for those who are not serious students of music.

## *Usher Policy*

All students who are required to attend Blue Card events must usher at least once each semester. One usher is allotted for each event; some events will require two ushers. Students should sign up in the music office; a record of ushers. Failure to usher each semester will result in an Incomplete for applied music.

Ushers should dress professionally since you are representing the Music Department. An usher's duties and responsibilities include:

- Pick up programs and blue cards from main office (afternoon performance) or backstage (evening or weekend performance)
- Arrive at venue 30 minutes before performance time
- Distribute programs and blue cards
- Ensure that no food, drink, or gum enters the house
- When performer enters stage, close doors
- Sit inside vestibule during performance, opening door to latecomers only at appropriate moments in the program
- Open doors at intermission, closing again as above
- Open doors at end
- Collect blue cards from majors
- Return blue cards and remaining programs to main office. Don't hold onto them for a week. It is important they are returned to the department by you. Don't expect someone to return them for you. Doing so may result in students not receiving any credit.
- Display professionalism in dealing with the general public

Please be aware that students who arrive late or leave early DO NOT receive blue card credit; these students should not be given cards, nor should cards be accepted from them. This is a policy of the Department of Music and applies both for blue cards and white cards (for non-majors). If there are any problems or concerns, the student should be referred to Mr. Zeisler or Mrs. Casper.

Professional attire is required when ushering. This does not include jeans, shorts, t-shirts, sandals, or sneakers. For men, it is recommended you wear a jacket and tie. Women should wear a dress or pant suit. As an usher, you are representing the department as well as yourself. Show pride by dressing appropriately.

# Section Four: Getting Out

## ♪ The Recital

### *♫ Recital Appearance Requirements*

Students in the Music Education degree, with Applied Music numbering 441-442, are required to complete a satisfactory half-hour private recital. Private recitals are heard only by the music faculty and the recitalist's family. Students may, at the discretion of the faculty, perform a half-hour public recital instead of a half-hour private recital. The decision to allow a public recital will be made in conjunction with the student's Applied Music teacher, and will be made when the student performs for recital approval.

Students in the Music Performance degree, with Applied Music numbering 252, are required to complete a satisfactory half-hour public recital. The faculty will review the progress and potential of each performance major following the sophomore recital. Results of this review will determine the student's acceptability for continuing in the program.

Students in the Music Performance degree, with Applied Music numbering 452, are required to complete a satisfactory full-hour public recital.

In no case will a half-hour sophomore performance recital be accepted in lieu of a half-hour senior education recital. Students in both programs are expected to study Applied Music for the number of semesters required in the program.

Students are required to continue studying with their applied teacher during the semester the recital is given. Only students performing during the first two (2) weeks of the semester will be exempt.

### *♫ Recital Approvals*

Students wishing to perform a recital must first sign up for and pass a Recital Approval. Recital Approvals for fall semester recitals are normally heard at a faculty-determined date in September, although students may be heard at an Approval during the close of the spring semester, at their teacher's discretion. Recital Approvals for spring semester recitals are heard during the close of the fall semester or at a faculty-determined date shortly before the midterm of the spring semester.

Students wishing to perform on a Recital Approval must submit their complete program to the office before the posted deadline. Recital Approval Forms must be typed and in the correct order of the program. Students not submitting acceptable programs before the deadline will not be allowed to perform on the Approval. Voice majors must submit song translations with the Recital Approval Form. They must be in poetry form and typed.

Once submitted, changes in an approved recital program may not be made without the consent of the student's jury members.

For half-hour recitals, time limitations should be watched carefully: 25 minutes minimum performing time; 35 minutes maximum on stage. For full-hour recitals, the minimum performing time is 50 minutes. Every half-hour and full-hour recital will include a minimum of one memorized movement or composition.

- Voice:** The entire recital program must be memorized at the recital approval and the recital. All four main languages (Italian, English, German, French) must be represented on the program.
- Instrument:** At least one movement (or an entire shorter work) must be memorized at the recital approval and the recital.
- Keyboard:** Normally, all solo work must be memorized for performance majors. For education majors, a minimum of 30% of the program must be memorized. Specific questions should be referred to the keyboard section head.

### **Submitting a Program**

Students must submit their program using the appropriate form. Recital Approval Forms are available in the Music Office. Students are warned to follow the instructions on the form carefully. For each composition performed, the student must include:

- Actual time in minutes and seconds
- Complete title of composition (in the original language)
  - If multi-movement, titles and/or tempos of each movement performed
  - If an excerpt (operatic aria, one movement from a concerto, etc.), the complete title of the larger work
- Full name of the composer
  - If the composer is unknown, then the editor/arranger, etc. will do: indicate *ed.* or whatever is appropriate
- Birth and death dates of the composer

Students are encouraged to browse through previous recital programs for examples of the above format. Programs are on file in the main office.

- Voice:** Vocalists must submit translations at the same time as the recital approval program is submitted. Translations must be typed, left justified, and single-spaced. No special formatting (centering, boldface, etc.) is necessary, although translations generally appear in poetic line form as opposed to paragraph form.

The correct order of the program must be submitted with the Recital Approval Form on or before the scheduled due date. If a program order is not received by that date, the order on the recital approval program will be assumed to be correct. Absolutely no changes in the printed program will be possible after 10 days before the recital.

## *♩ Scheduling the Recital*

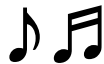
After successfully passing a Recital Approval, it is the student's responsibility to reserve rehearsal and performance dates in the Chandler Recital Hall. No recital may be performed earlier than two weeks following the Recital Approval, unless approved by the chairman.

Half-hour recitals will be presented on Monday or Wednesday afternoons. Full-hour recitals will be presented during the evening or on Sunday afternoons. Exceptions to the half-hour recital scheduling policy are not permitted.

For sophomore and senior recital it is the student's responsibility to meet with the Scheduling Secretary as soon as possible to reserve a recital date. Students are encouraged to book their dates at least one month in advance. A \$75.00 recital fee is required when reserving the hall.

Students are not responsible for duplicating programs or arranging for audio recording services for their recitals. University personnel are employed for these purposes.

Students in the Music Education degree program may not schedule their recital during the student teaching semester unless approved by the applied teacher and the department chairman. This requirement should be met prior to student teaching.



## ♪ Piano Proficiency

All students in the Voice Performance and Voice, Keyboard, or Guitar Education programs are required to pass a Piano Proficiency Examination. Education majors are expected to pass the examination prior to student teaching. The Piano Proficiency Examination will be separate from piano class examinations.

### 👉 *Technique*

Major keys of C, G, D, A, E, F, B $\flat$ , E $\flat$ , A $\flat$ , and D $\flat$ .  
Minor keys of c, g, d, a, e, f, and b. (harmonic minor)

Scales: 1, 2, and 3 octaves in quarters, eighths, and triplets, respectively. Hands together, parallel motion. M.M.=60.

Arpeggios: Root position tonic triads, hands together in parallel motion, 2 octaves in quarters and eighths. Dominant seventh and fully diminished seventh arpeggios on the same roots, 5-note arpeggios, 1 octave up and down. M.M.=60.

Triads: Tonic triads block style with inversions, 2 octaves in quarters and eighths, hands together. M.M.=30. Progression: V $^7$  – I and vii $^{\circ 7}$  – I, specified seventh chords on the same roots, 4-note chords resolving to tonic.

Progression: I – IV $_4^6$  – I – V $_5^6$  – I (3 notes in left hand only)

### 👉 *Functional Skills*

Harmonization and Improvisation: Play by ear familiar melodies such as "Happy Birthday" and "America" while providing a simple chordal accompaniment in the left hand.

Harmonization with the I, IV, and V chords is minimum, using inversions as needed for voice leading.

### 👉 *Sight Reading*

Folk melody with traditional harmonic accompaniment.

Simple accompaniments to songs, with a level comparable to those found in Books 5, 6, and 7 of *Making Music Your Own*.

Solo literature in homophonic texture.

### 👉 *Repertoire*

Solos such as those found in *Easy Classics to Moderns*, or of the level of Schumann's *Album For the Young* and easier Clementi sonatinas.

Two patriotic songs, using score: *Star Spangled Banner*, *America*, or *America the Beautiful*.

An approved accompaniment to a vocal composition, to be prepared and performed with a vocalist. Collaborative, expressive support must be exhibited.

# ♪ Voice Proficiency

All students in the Voice, Keyboard, or Guitar Education program are required to take a Voice Proficiency Examination prior to student teaching. Students are expected to pass all sections of the examination before the department will approve them for graduating. The Voice Proficiency Examination will be separate from voice class examinations.

## 👉 🎵 **Section I**

Sing one solo (in your own range) which you would teach to a student in senior high school who would be competing for Honors Chorus. Be able to explain in detail how and why you would teach it to a student.

## 👉 🎵 **Section II**

Select one junior high school choral composition. Sing one part other than your own while the pianist plays the accompaniment (not the voice parts). Whenever possible, choose a gender part other than your own and do not sing the melody. You must provide at least four legal copies of the music for the examination committee.

## 👉 🎵 **Section III**

Select one song from an elementary series, grade 5 or 6. Sing the song while playing the piano accompaniment yourself.

## 👉 🎵 **Section IV**

Sight sing and play one song chosen by the examination committee from an elementary series, grade 3 or 4. Play the melody and make up chords for accompaniment.

## 👉 🎵 **Section V**

Discuss vocal production (posture, breathing and support, articulation, phonation, resonance, ...) Study guides are available in the main office.

Evaluation will be based on discussion of vocal technique; vocal quality (is it pleasing?); testing and assignment of voices to correct part; appropriateness of material selected for sections one and two; correct musical style, tempo, and mood; and ability to sight sing and play in section four.

# Appendix

- **Curriculum Sheets**
- **Student Evaluation of Applied Faculty Form**
- **Program Codes**
- **General Student Recital Form**
- **Recital Approval Form**
- **Approved Accompanist List**
- **Floor Plan of Diehn Fine & Performing Arts**
- **Faculty Directory**
- **Calendar of Events**

# Curriculum Record

**Degree Program:** Bachelor of Music/ **Composition** (122-132)

Name: \_\_\_\_\_ ID #: \_\_\_\_\_

Address: \_\_\_\_\_ Phone: \_\_\_\_\_

\_\_\_\_\_ Advisor: \_\_\_\_\_

**Please Note:** Courses in *italics* are not offered every year.

General Education (44-54)		Composition Concentration (61)	
ENGL 110C	3	MUSC 221 Music Theory (Satisfies computer skills req.)	3
ENGL 111C	3	MUSC 222 Music Theory	3
MATH 102M, MATH 162M, or STAT 130M	3	MUSC 223 Ear Training, Sight Singing and Dictation	1
Foreign Language (0-6 credits, see below)	0-6	MUSC 224 Ear Training, Sight Singing and Dictation	1
ART 121A, ARTS 122A, DANC 185A, or THEA 241A	3	MUSC 232 Introduction to Music Composition	3
HIST 101, 102, 103, 104	3	MUSC 261 Music Literature	1
ENGL 112L or ENGL 144L	3	MUSC 262 Music Literature	1
PHIL 110P, PHIL 120P, or PHIL 150P	3	MUSC 309 Principles of Conducting	1
Natural Science (see list below)	4	MUSC 321 Advanced Music Theory	2
Natural Science (must be <u>same</u> sequence, see below)	4	MUSC 322 Advanced Music Theory	2
Natural Science and Technology (3-4 credits)	3-4	MUSC 323 Adv. Ear Training, Sight Singing and Dictation	1
Social Science (must be different field see below)	3	MUSC 324 Adv. Ear Training, Sight Singing and Dictation	1
Minor, Cluster, or Interrelated Certificate	9-12	<b>MUSC 331 Composition</b>	<b>3</b>
		<b>MUSC 332 Composition</b>	<b>3</b>
		MUSC 335T Recording / Electronic Music (satisfies Tech req.)	3
		MUSC 336 Recording / Electronic Music	3
<b>Applied Music (8)</b>		MUSC 361 History of Music	3
Piano (Class or Studio, a total of six hours)	1	MUSC 362 History of Music	3
Piano	1	MUSC 414 Advanced Instrumental Conducting	2
Piano	1	<i>MUSC 421 Counterpoint</i>	2
Piano	1	<i>MUSC 422 Form and Analysis</i>	2
Piano	1	<i>MUSC 424 Orchestration</i>	2
Secondary Performance Area (may be additional piano)	1	<b>MUSC 431 Composition</b>	<b>3</b>
Secondary Performance Area (same instrument or voice)	1	<b>MUSC 432 Composition (satisfies oral communication req)</b>	<b>3</b>
<b>Ensemble (5)</b> (See Handbook or Catalog)		<i>MUSC 466 Music in the Twentieth Century</i>	3
Large Ensemble	1	400-level Music History	3
Large Ensemble	1	400-level Music History	3
Large Ensemble	1	<b>Electives (4)</b>	
Small Ensemble	1	Elective (may be used for career advantage)	
Small Ensemble	1		

Recital Attendance Requirement	Number of Blue Cards Required -
--------------------------------	---------------------------------

Foreign Language: See University Catalog for specific requirements. French, German, or Italian are strongly recommended.

Natural Science courses: BIOL 101N-102N, 108N-109N; CHEM 101N-102N; GEOL 110N-112N, 111N-112N; OCEN 106N-107N; PHYS 101N-102N, 103N-104N, 111N-112N, 231N-232N

Social Science courses: ANTR 110S; CRJS 215S; ECON 200S, 201S, 202S; ENGL 208S; GEOG 100S, 101S; POLS 100S, 101S; PSYC 201S, 203S; SOC 201S; SPCH 200S

Academic Honors courses that are equivalent to any of the above courses will meet General Education requirements.



**Curriculum Record**

**Degree Program:** Bachelor of Music/ **Performance/** Voice (135-139)

Name: \_\_\_\_\_ ID #: \_\_\_\_\_

Address: \_\_\_\_\_ Phone: \_\_\_\_\_ Advisor: \_\_\_\_\_

**Please Note:** Courses in *italics* are not offered every year.

General Education (56-60)		Voice Concentration (39)	
ENGL 110C	3	MUSC 221 Music Theory	3
ENGL 111C, HIST 111, PHIL 111	3	MUSC 222 Music Theory	3
MATH 102M, MATH 162M, or STAT 130M	3	MUSC 223 Ear Training, Sight Singing and Dictation	1
Foreign Language (0-6 credits, see below)	0-6	MUSC 224 Ear Training, Sight Singing and Dictation	1
Second Foreign Language (Fr, Ger, Is strongly recommended)	3	MUSC 261 Music Literature	1
Second Foreign Language (same language)	3	MUSC 262 Music Literature	1
ART 121A, ARTS 122A, DANC 185A, or THEA 241A	3		
HIST 101H, 102H, 103H, 104H	3	MUSC 309 Principles of Conducting	1
ENGL 112L or ENGL 144L	3	MUSC 321 Advanced Music Theory	2
PHIL 110P, PHIL 120P, or PHIL 150P	3	MUSC 322 Advanced Music Theory	2
Natural Science (see list below)	4	MUSC 323 Adv. Ear Training, Sight Singing and Dictation	1
Natural Science (must be same sequence, see below)	4	MUSC 324 Adv. Ear Training, Sight Singing and Dictation	1
Additional Science or Technology course	3-4	<i>MUSC 345 Italian and English Diction for Singers</i>	1
Social Science (see list below)	3	<i>MUSC 346 French and German Diction for Singers</i>	1
Students must choose a minor or cluster	9-12	MUSC 361 History of Music	3
Minor, Cluster, or Interrelated Certificate		MUSC 362 History of Music	3
		MUSC 413 Advanced Choral Conducting	2
		<i>MUSC 421 Counterpoint (offered every other year)</i>	2
		<i>MUSC 422 Form and Analysis (offered every other year)</i>	2
<b>Applied Music (32)</b>		<i>MUSC 445 Applied Music Pedagogy</i>	1
MUSA 151 Hour Lesson (Performance)	3	<i>MUSC 446 Applied Music Pedagogy</i>	1
MUSA 152 Hour Lesson (Performance)	3	400-level Music History	3
MUSA 251 Hour Lesson (Performance)	3	400-level Music History	3
MUSA 252 Hour Lesson (Performance)	3		
Sophomore Recital (Half-Hour)	0		
Junior Standing Approved	0		
MUSA 351 Hour Lesson (Performance)	3		
MUSA 352 Hour Lesson (Performance)	3	<b>Ensemble (8)</b>	
MUSA 451 Hour Lesson (Performance)	3	Large Ensemble (Concert Choir)	1
MUSA 452 Hour Lesson (Performance)	3	Large Ensemble (Concert Choir)	1
Senior Recital (Hour)	0	Large Ensemble (Concert Choir)	1
Piano (Class or Studio; a total of six hours)	1	Opera Workshop	1
Piano	1	Small Ensemble (can be additional Opera Workshop, see Handbook)	1
Piano	1	Small Ensemble	1
Piano	1	Small Ensemble	1
Piano	1		
Piano	1		
Piano Proficiency Examination	0		
Secondary Performance Area (may be additional piano)	1		
Secondary Performance Area (same instrument)	1		

Recital Attendance Requirement	Number of Blue Cards Required -
--------------------------------	---------------------------------

Foreign Language: See University Catalog for specific requirements. Second Foreign Language must be different from first Foreign Language. French, German, or Italian are strongly recommended.

Natural Science courses: BIOL 101N-102N, 108N-109N; CHEM 101N-102N; GEOL 110N-112N, 111N-112N; OCEN 106N-107N; PHYS 101N-102N, 103N-104N, 111N-112N, 231N-232N

Social Science courses: ANTR 110S; CRJS 215S; ECON 200S, 201S, 202S; ENGL 208S; GEOG 100S, 101S; POLS 100S, 101S; PSYC 201S, 203S; SOC 201S; SPCH 200S

Academic Honors courses that are equivalent to any of the above courses will meet General Education requirements.

# Curriculum Record

**Degree Program:** Bachelor of Music/ **Performance/** Keyboard or Guitar (121-131)

Name: \_\_\_\_\_ ID #: \_\_\_\_\_

Address: \_\_\_\_\_ Phone: \_\_\_\_\_

Advisor: \_\_\_\_\_

**Please Note:** Courses in *italics* are not offered every year.

General Education (47-57)			Keyboard or Guitar Concentration (42)		
ENGL 110C	3		MUSC 221 Music Theory	3	
ENGL 111C	3		MUSC 222 Music Theory	3	
MATH 102M, MATH 162M, or STAT 130M	3		MUSC 223 Ear Training, Sight Singing and Dictation	1	
Foreign Language (0-6 credits, see below)	0-6		MUSC 224 Ear Training, Sight Singing and Dictation	1	
CS 101, PHYS 332, or PHYS 333U	3		MUSC 261 Music Literature	1	
ART 121A, ARTS 122A, DANC 185A, or THEA 241A	3		MUSC 262 Music Literature	1	
HIST 101, 102, 103, 104	3		MUSC 309 Principles of Conducting	1	
ENGL 112L or ENGL 144L	3		MUSC 321 Advanced Music Theory	2	
PHIL 110P, PHIL 120P, or PHIL 150P	3		MUSC 322 Advanced Music Theory	2	
Natural Science (see list below)	4		MUSC 323 Adv. Ear Training, Sight Singing and Dictation	1	
Natural Science (must be <u>same</u> sequence, see below)	4		MUSC 324 Adv. Ear Training, Sight Singing and Dictation	1	
Natural Science and Technology (3-4)	3-4		MUSC 361 History of Music	3	
Social Science (see below)	3		MUSC 362 History of Music	3	
Students must choose a minor or cluster (9-12)	9-12		MUSC 413 or MUSC 414 Advanced Conducting	2	
Minor, Cluster, or Interrelated Certificate			<i>MUSC 421 Counterpoint</i>	2	
			<i>MUSC 422 Form and Analysis</i>	2	
			<i>MUSC 424 Orchestration</i>	2	
<b>Applied Music (26)</b>					
MUSA 151 Hour Lesson (Performance)	3		<i>MUSC 445 Applied Music Pedagogy</i>	1	
MUSA 152 Hour Lesson (Performance)	3		<i>MUSC 446 Applied Music Pedagogy</i>	1	
MUSA 251 Hour Lesson (Performance)	3		400-level Music History	3	
MUSA 252 Hour Lesson (Performance)	3		400-level Music History	3	
Sophomore Recital (Half-Hour)	0		400-level Music History	3	
Junior Standing Approved	0		<b>Ensemble (6)</b> (see Handbook or Catalog)		
MUSA 351 Hour Lesson (Performance)	3		Large Ensemble	1	
MUSA 352 Hour Lesson (Performance)	3		Large Ensemble	1	
MUSA 451 Hour Lesson (Performance)	3		Small Ensemble	1	
MUSA 452 Hour Lesson (Performance)	3		Small Ensemble	1	
Senior Recital (Hour)	0		Ensemble	1	
Secondary Performance Area	1		Ensemble	1	
Secondary Performance Area (same instrument or voice)	1				

Recital Attendance Requirement	Number of Blue Cards Required →
--------------------------------	---------------------------------

Foreign Language: See University Catalog for specific requirements. French, German, or Italian are strongly recommended.

Natural Science courses: BIOL 101N-102N, 108N-109N; CHEM 101N-102N; GEOL 110N-112N, 111N-112N; OCEN 106N-107N; PHYS 101N-102N, 103N-104N, 111N-112N, 231N-232N

Social Science courses: ANTR 110S; CRJS 215S; ECON 200S, 201S, 202S; ENGL 208S; GEOG 100S, 101S; POLS 100S, 101S; PSYC 201S, 203S; SOC 201S; SPCH 200S

Academic Honors courses that are equivalent to any of the above courses will meet General Education requirements.

# Curriculum Record

**Degree Program:** Bachelor of Music/ **Music Education/** Instrumental (128-135)

Name: \_\_\_\_\_ ID #: \_\_\_\_\_

Address: \_\_\_\_\_ Phone: \_\_\_\_\_

Advisor: \_\_\_\_\_

**Please Note:** Courses in *italics* are not offered every year.

General Education (38-45)		Instrumental Concentration (35)	
ENGL 110C	3	MUSC 221 Music Theory	3
ENGL 111C	3	MUSC 222 Music Theory	3
MATH 102M, MATH 162M, or STAT 130M	3	MUSC 223 Ear Training, Sight Singing and Dictation	1
Foreign Language (0-6 credits, see below)	0-6	MUSC 224 Ear Training, Sight Singing and Dictation	1
ART 121A, ARTS 122A, DANC 185A, or THEA 241A	3	MUSC 261 Music Literature	1
HIST 101H, 102H, 103H, or 104H	3	MUSC 262 Music Literature	1
ENGL 112L, ENGL 144L, or FLET 100L	3	<i>MUSC 301 Music Education: Trumpet Class</i>	1
PHIL 110P, PHIL 120P, or PHIL 150P	3	<i>MUSC 302 Music Education: Brass Class</i>	1
Natural Science (see list below)	4	<i>MUSC 303 Music Education: Clarinet Class</i>	1
Natural Science (must be same sequence, see below)	4	<i>MUSC 304 Music Education: Woodwind Class</i>	1
Additional Science or Technology course	3-4	<i>MUSC 305 Music Education: Violin Class</i>	1
Social Science (see below)	3	<i>MUSC 306 Music Education: String Class</i>	1
Comm 101R, 103R, 112R	3	<i>MUSC 307 Music Education: Percussion Class</i>	1
<b>Applied Music (19)</b>		MUSC 309 Principles of Conducting	1
MUSA 141 Hour Lesson	2	MUSC 321 Advanced Music Theory	2
MUSA 142 Hour Lesson	2	MUSC 322 Advanced Music Theory	2
MUSA 241 Hour Lesson	2	MUSC 323 Adv. Ear Training, Sight Singing and Dictation	1
MUSA 242 Hour Lesson	2	MUSC 324 Adv. Ear Training, Sight Singing and Dictation	1
MUSA 341 Hour Lesson	2	MUSC 335T Recording / Electronic Music (satisfies Tech. req.)	3
MUSA 342 Hour Lesson	2	MUSC 361 History of Music (satisfies writ. int. req.)	3
MUSA 441 Hour Lesson	2	MUSC 362 History of Music	3
Senior Recital (Half-Hour)	0	MUSC 414 Advanced Instrumental Conducting	2
MUSC 101 Beginning Piano Class	1		
MUSC 102 Beginning Piano Class	1		
MUSC 107 Beginning Voice Class	1		
		<b>Professional Education (29)</b>	
Secondary Performance Area (may be add'l piano or voice)	1	ECI 301 Social and Cultural Foundations of Education	3
Secondary Performance Area (same instrument or voice)	1	ESSE 406 Teaching Exceptional Students in the Regular Classroom	3
		ECI 360 Classroom Management	2
<b>Ensemble (7)</b>		ESSE 413 Foundations of Adolescent Development	3
Large Ensemble (Band, Orchestra)	1	<i>MUSC 405 Elementary Instrumental Methods</i>	2
Large Ensemble (Band, Orchestra)	1	<i>MUSC 406 Practicum: Elementary Instrumental</i>	1
Large Ensemble (Band, Orchestra)	1	<i>MUSC 407 Secondary Instrumental Methods</i>	2
Large Ensemble (Band, Orchestra)	1	<i>MUSC 408 Practicum: Secondary Instrumental</i>	1
Large Ensemble (Band, Orchestra)	1	ECI 485 Student Teaching	12
Small Instrumental Ensemble (see Handbook or Catalog)	1		
Small Instrumental Ensemble	1		

Recital Attendance Requirement	Number of Blue Cards Required -
--------------------------------	---------------------------------

Foreign Language: See University Catalog for specific requirements.

Natural Science courses: BIOL 101N-102N, 108N-109N; CHEM 101N-102N; GEOL 110N-112N, 111N-112N; OCEN 106N-107N; PHYS 101N-102N, 103N-104N, 111N-112N, 231N-232N

Social Science courses: ANTR 110S; CRJS 215S; ECON 200S, 201S, 202S; ENGL 208S; GEOG 100S, 101S; POLS 100S, 101S; PSYC 201S, 203S; SOC 201S; SPCH 200S

Academic Honors courses that are equivalent to any of the above courses will meet General Education requirements.



## Curriculum Record

**Degree Program:** Bachelor of Music/ **Music Education**/ Dual Certification (5th Year Program)

Name: \_\_\_\_\_ ID #: \_\_\_\_\_

Address: \_\_\_\_\_ Phone: \_\_\_\_\_

\_\_\_\_\_ Advisor: \_\_\_\_\_

**Please Note:** Courses in *italics* are not offered every year.

Instrumental Emphasis (+19) (Vocal Secondary)		Vocal/Keyboard/Guitar Emphasis (+17) (Instrumental Secondary)	
Piano (additional 4 hours, a total of 6)	1	<i>MUSC 301 Music Ed: Trumpet Class</i>	1
Piano	1	<i>MUSC 302 Music Ed: Brass Class</i>	1
Piano	1	<i>MUSC 303 Music Ed: Clarinet Class</i>	1
Piano	1	<i>MUSC 304 Music Ed: Woodwind Class</i>	1
Voice (additional 5 hours, a total of 6)	1	<i>MUSC 305 Music Ed: Violin Class</i>	1
Voice	1	<i>MUSC 306 Music Ed: String Class</i>	1
Voice	1	<i>MUSC 307 Music Ed: Percussion Class</i>	1
Voice	1		
Voice	1		
<i>MUSC 401 Elementary Vocal Methods</i>	2	<i>MUSC 405 Elementary Instrumental Methods</i>	2
<i>MUSC 402 Practicum: Elementary Vocal</i>	1	<i>MUSC 406 Practicum: Elementary Instrumental</i>	1
<i>MUSC 403 Secondary Vocal Methods</i>	2	<i>MUSC 407 Secondary Instrumental Methods</i>	2
<i>MUSC 404 Practicum: Secondary Vocal</i>	1	<i>MUSC 408 Practicum: Secondary Instrumental</i>	1
MUSC 413 Advanced Choral Conducting	2	MUSC 414 Advanced Instrumental Conducting	2
Large Ensemble (Concert Choir)	1	Large Ensemble (Band or Orchestra)	1
Large Ensemble (Concert Choir)	1	Large Ensemble (Band or Orchestra)	1
Piano Proficiency Examination	0		
Voice Proficiency Examination	0		

The student teaching experience will consist of one-half semester vocal teaching and one-half semester instrumental teaching.

# Curriculum Record

**Degree Program:** Bachelor of Arts/ Music (120)

Name: \_\_\_\_\_ ID #: \_\_\_\_\_

Address: \_\_\_\_\_ Phone: \_\_\_\_\_

\_\_\_\_\_ Advisor: \_\_\_\_\_

**Please Note:** Courses in *italics* are not offered every year.

General Education (69)		Music History Concentration (41)	
ENGL 110C	3	MUSC 221 Music Theory	3
ENGL 111	3	MUSC 222 Music Theory	3
ENGL 327	3	MUSC 223 Ear Training, Sight Singing and Dictation	1
MATH 102M, MATH 162M, or STAT 130M	3	MUSC 224 Ear Training, Sight Singing and Dictation	1
FR 101F or GER 101F	3	MUSC 261 Music Literature	1
FR 102F or GER 102F (must continue same language)	3	MUSC 262 Music Literature	1
FR 201 or GER 201 (must continue same language)	3	MUSC 309 Principles of Conducting	1
FR 202 or GER 202 (must continue same language)	3	MUSC 321 Advanced Music Theory	2
ART 121A, ARTS 122A, DANC 185A, or THEA 241A	4	MUSC 322 Advanced Music Theory	2
HIST 101, 102, 103, 104	3	MUSC 323 Adv. Ear Training, Sight Singing and Dictation	1
ENGL 112L or ENGL 144L	3	MUSC 324 Adv. Ear Training, Sight Singing and Dictation	1
PHIL 110P, PHIL 120P, or PHIL 150P	3	MUSC 361 History of Music	3
Natural Science (see list below)	4	MUSC 362 History of Music	3
Natural Science (must be same sequence, see below)	4	<i>MUSC 421 Counterpoint</i>	2
Social Science (see list below)	3	<i>MUSC 422 Form and Analysis</i>	2
Natural Science and Technology (3-4)		<i>MUSC 424 Orchestration</i>	2
Upper Division (Group 1)	3	<i>MUSC 466 Music in the Twentieth Century</i>	3
Upper Division (Group 2)	3	400-level Music History	3
Upper Division (Group 3) Subject (Non-Music)	3	400-level Music History	3
Upper Division (Group 3) (Non-Music, different field)	3	400-level Music History	3
		<b>Ensemble (2)</b> (see Handbook or Catalog)	
		Ensemble	1
		Ensemble	1
		<b>Electives (4)</b>	
Applied Music (Class or Studio)	1	Music Elective	1
Applied Music (same instrument or voice)	1	Elective (may be Music)	
Applied Music (same instrument or voice)	1		
Applied Music (same instrument or voice)	1		

Recital Attendance Requirement	Number of Blue Cards Required →
--------------------------------	---------------------------------

No more than 6 activity credits (beyond the two required for ensemble) may be applied toward the degree. (A maximum of 8 credits.)

Students must fulfill foreign language requirements by taking college-level language courses or through exemption by achievement/AP tests.

Natural Science courses: BIOL 101N-102N, 108N-109N; CHEM 101N-102N; GEOL 110N-112N, 111N-112N; OCEN 106N-107N; PHYS 101N-102N, 103N-104N, 111N-112N, 231N-232N

Social Science courses: ANTR 110S; CRJS 215S; ECON 200S, 201S, 202S; ENGL 208S; GEOG 100S, 101S; POLS 100S, 101S; PSYC 201S, 203S; SOC 201S; SPCH 200S

Academic Honors courses that are equivalent to any of the above courses will meet General Education requirements.

# Curriculum Record

**Degree Program:** Music Minor (Performance, History, or Composition)

Name: \_\_\_\_\_ ID #: \_\_\_\_\_

Address: \_\_\_\_\_ Phone: \_\_\_\_\_

\_\_\_\_\_ Advisor: \_\_\_\_\_

Performance Concentration (16)			Music History Concentration (18)			Composition Concentration (18)		
MUSA 139	1		MUSC 221 Music Theory	3		MUSC 221 Music Theory	3	
MUSA 140	1		MUSC 222 Music Theory	3		MUSC 222 Music Theory	3	
MUSA 239	1		MUSC 361 History of Music	3		MUSA 339	2	
MUSA 240	1		MUSC 362 History of Music	3		MUSA 340	2	
MUSA 339	2		400-level Music History	3		MUSA 439	2	
MUSA 340	2		Musc 460U History and Aesthetics	3		MUSA 440	2	
MUSA 439	2		of Jazz			MUSC 335	2	
MUSA 440	2					*Upper Division Music	1	
*Upper Division Music	1					*Upper Division Music	1	
*Upper Division Music	1							
*Upper Division Music	1							
*Upper Division Music	1							

\* Upper Division Music (all programs): May be used for an ensemble.

\*\* Vocal students must take 2 semesters of Diction.

\*\*\* Keyboard students must take at least 2 semesters of ensembles.

Recital Attendance Requirement		Number of Blue Cards Required -	
--------------------------------	--	---------------------------------	--

OLD DOMINION UNIVERSITY

*Department of Music*

---

## Student Evaluation of Faculty

Course: MUSA (number)

Applied Music Instructor: \_\_\_\_\_

Semester: \_\_\_\_\_

*Please do not sign your name to this evaluation.*

OLD DOMINION UNIVERSITY

*Department of Music*

---

GSR Program Information Form  
**PLEASE TYPE!!**

Student Name: \_\_\_\_\_

Instrument: \_\_\_\_\_ MUSA number: \_\_\_\_\_

*Please note that "Voice" is not an instrument, but "Soprano" or "Tenor" is.*

Accompanist(s) Name(s) and instrument(s):

*List all who are assisting in your program.*

---

---

---

### Instructions

**Timing:** Exact minutes and seconds of each movement.

**Title:** If *multi-movement*, indicate titles/tempo markings of each movement played. If from a larger work such as an *opera or oratorio*, indicate the title of the larger work as well as the individual song. If a *recit. and aria*, indicate this as well.

**Composer:** Complete first and last names of the composer, **including birth and death dates**. If an arrangement, indicate "arr." before arranger's full name. If composer is still living, indicate birth year only (b. 1943).

**If these instructions are not followed, your program will not be accepted!**

Timing	Title	Composer (Dates)

*Correct timing information is very important. In most cases, performances will be limited to 7 minutes. Additional time may be submitted, but movements will be cut if time is needed for other students. Priority in programming goes to performance majors who have specific GSR requirements. Others may perform if time is available. Recital time is limited to 50 minutes total.*

### APPLIED MUSIC TEACHER:

I agree that the general student recital program typed above is correct, *including the spelling of foreign words and names*. Please type the program as submitted.

Signature: \_\_\_\_\_

OLD DOMINION UNIVERSITY

*Department of Music*

---

## Recital Approval Form

# PLEASE TYPE!!

Student Name: \_\_\_\_\_

Instrument: \_\_\_\_\_ MUSA number: \_\_\_\_\_

*Please note that "Voice" is not an instrument, but "Soprano" or "Tenor" is.*

Accompanist(s) Name(s) and instrument(s):

*List all who are assisting in your program.*

---

---

---

### Instructions

**Timing:** Exact minutes and seconds of each movement, as well as entire recital (it must be totalled) .

**Title:** If *multi-movement*, indicate titles/tempo markings of each movement played. If from a larger work such as an *opera or oratorio*, indicate the title of the larger work as well as the individual song. If a *recit. and aria*, indicate this as well.

**Composer:** Complete first and last names of the composer, **including birth and death dates**. If an arrangement, indicate "arr." before arranger's full name. If composer is still living, indicate birth year only (b. 1943).

Entire form must be typed as you would like your program. It is due two weeks prior to your recital approval. No changes will be made once your form is turned in and signed by your applied instructor. Any translations or program notes must be turned in with this form. They must also be typed. **There are no exceptions!** **If these instructions are not followed, your program will not be accepted!**

<b>Timing (Dates)</b>	<b>Title</b>	<b>Program</b>	<b>Composer</b>
---------------------------	--------------	----------------	-----------------

**APPLIED MUSIC TEACHER:**

I agree that the recital approval program typed above is correct, *including the spelling of foreign words and names*. Please type the program as submitted.

*Signature:* \_\_\_\_\_

OLD DOMINION UNIVERSITY

*Department of Music*

---

## Approved Accompanists

- Please contact accompanists well in advance.
- Payment arrangements are to be made directly between the student and the accompanist.
- Students needing accompanists may not negotiate with students who are presently studying keyboard at Old Dominion.

This list is only published to identify approved accompanists.

Hye-Yun Chung Bennett	483-6290
Nicole Birchak	363-7163
Robert Brown	625-3723
Sylvia Chapa	490-5744 (for GSR & Juries)
Bobbie Kesler-Corleto	423-2578
Kevin Long	714-2542
Welby Pugin	623-5445
John Roberts	423-3504
Jeanette Winsor	424-4277
Sally Wright	398-0690
Yangmi Ji	(h) 499-1385 (c) 469-2010
Robert Smith	833-6592
Ruth Winters	596-2933

Revised: January 9, 2004

## Faculty Directory

Dr. William S. Bartolotta . . . . .	226
Mr. Andre Kasparov . . . . .	230
Dr. Nancy K. Klein . . . . .	223
Dr. James W. Kosnik . . . . .	225
Mr. Kevin Long / Community Music Academy . . . . .	238
Dr. Harold Protsman, Emeritus . . . . .	239
Dr. Jo Ann Sims . . . . .	229
Ms. Leslie Stewart. . . . .	203
Dr. Lee J. Teply . . . . .	205
Prof. John Toomey . . . . .	204
Dr. Frank Ward, Jr. . . . .	206
Ms. Agnes M. Wynne . . . . .	240
Mr. Dennis J. Zeisler, Chair . . . . .	244
Patti Casper, Office Manager . . . . .	247

### Part Time and Adjunct Faculty:

Sherie Aguirre  
Vahn Armstrong  
Hye-Yun Bennett  
Patti Carlson  
Debbie Cross  
Peter DuBeau  
Dean Englert  
F. Gerard Errante  
Marlene Ford  
Marilyn Forman

Leslie Frittelli  
Sandra Gelb  
Scott Harris  
Kevin Long  
  
Carter Melin  
James Nesbit  
James Page  
Lou Sawyer  
Jennifer Snyder

David Walker  
Patti Waters

**Old Dominion University  
Department of Music  
Bluecard Calendar of Events**

**Fall 2003**

**All artists, ensembles, times, and venues are subject to change without prior notice.**

# Old Dominion University Department of Music Bluecard Calendar of Events

## Spring 2004

### January

01/23/04	2:00pm	String Class
01/26/04	8:00pm	Norfolk Chamber Consort \$

### February

02/06/04	7:30pm	Faculty Recital, Dr. Lee
02/14/04	7:30pm	Symphony Orchestra
02/15/04	3:00pm	Faculty Trio
02/16/04	4:00pm	Stamos Recital
02/23/04	8:00pm	Diehn Recital Series, \$Robin Redmond
02/24/04	12:30pm	Mater Class, Robin Redmond

### March

03/5/04	7:30pm	Elizabeth and Glenn Caluda
03/6/04	10:00am	Glenn Caluda Master Class
03/18/04	7:30pm	Faculty Recital, Marilyn Forman,
03/20/04	TBA	Piano Competition Finals
03/21/04	3:00pm	Master Class
03/22/04	8:00pm	Diehn Recital Series \$Malcom Bilsom
03/29/04	8:00pm	NCC

### April

TBA	8:00pm	Opera Wksp
04/13/04	7:30pm	Guitar Ensemble
04/14/04	4:00pm	GSR
04/16/04	7:30pm	Brass Choir
04/18/04	4:00pm	Jazz Ensemble
04/19/04	7:30pm	Diehn Recital Series, \$Steve Wilson
04/20/04	7:30pm	Madrigal/Collegium
04/21/04	7:30pm	Wind Ensemble
04/23/04	7:30pm	Percussion Ensemble
04/26/04	8:00pm	Creo

**All artists, ensembles, times, and venues are subject to change without prior notice.**