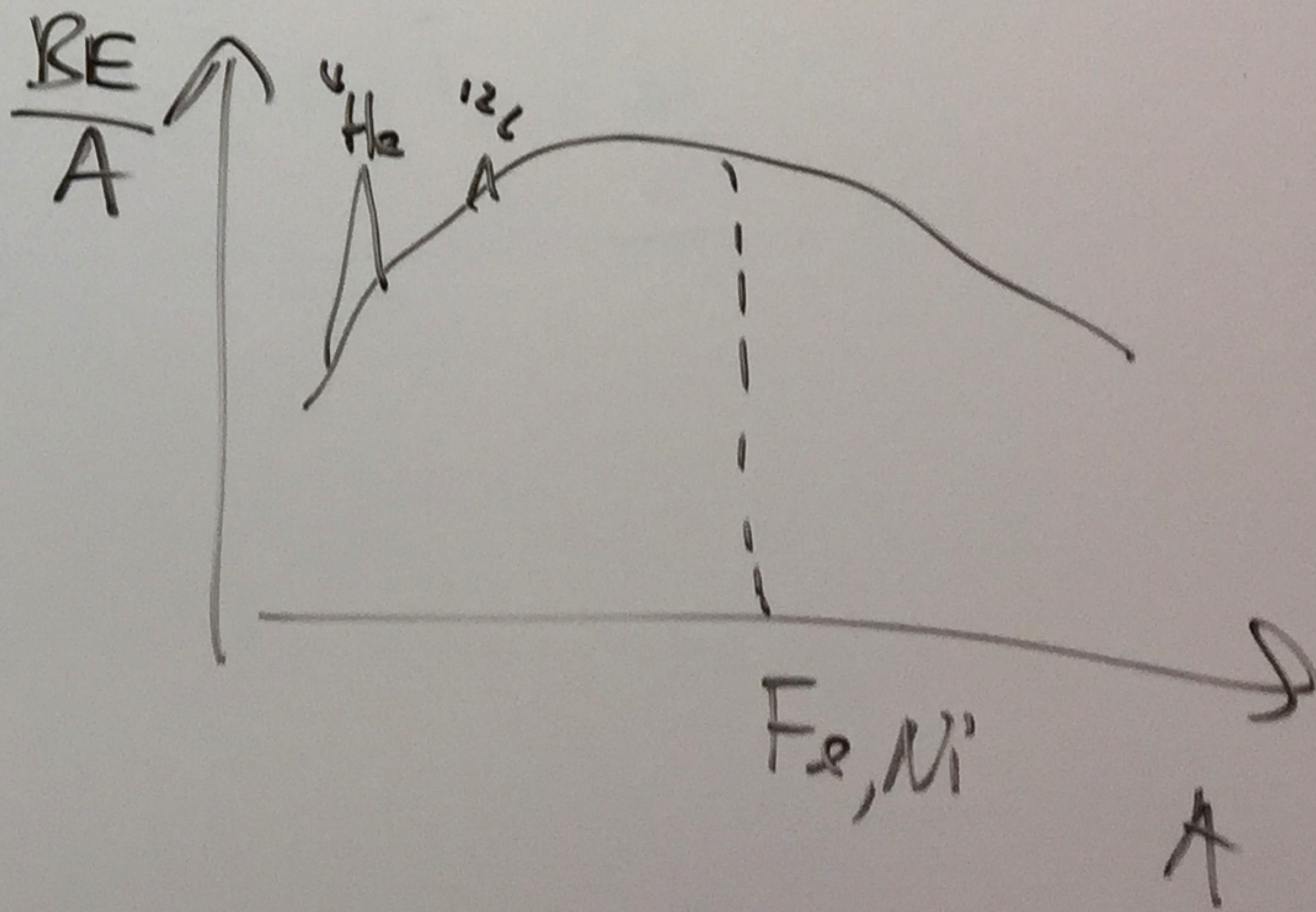
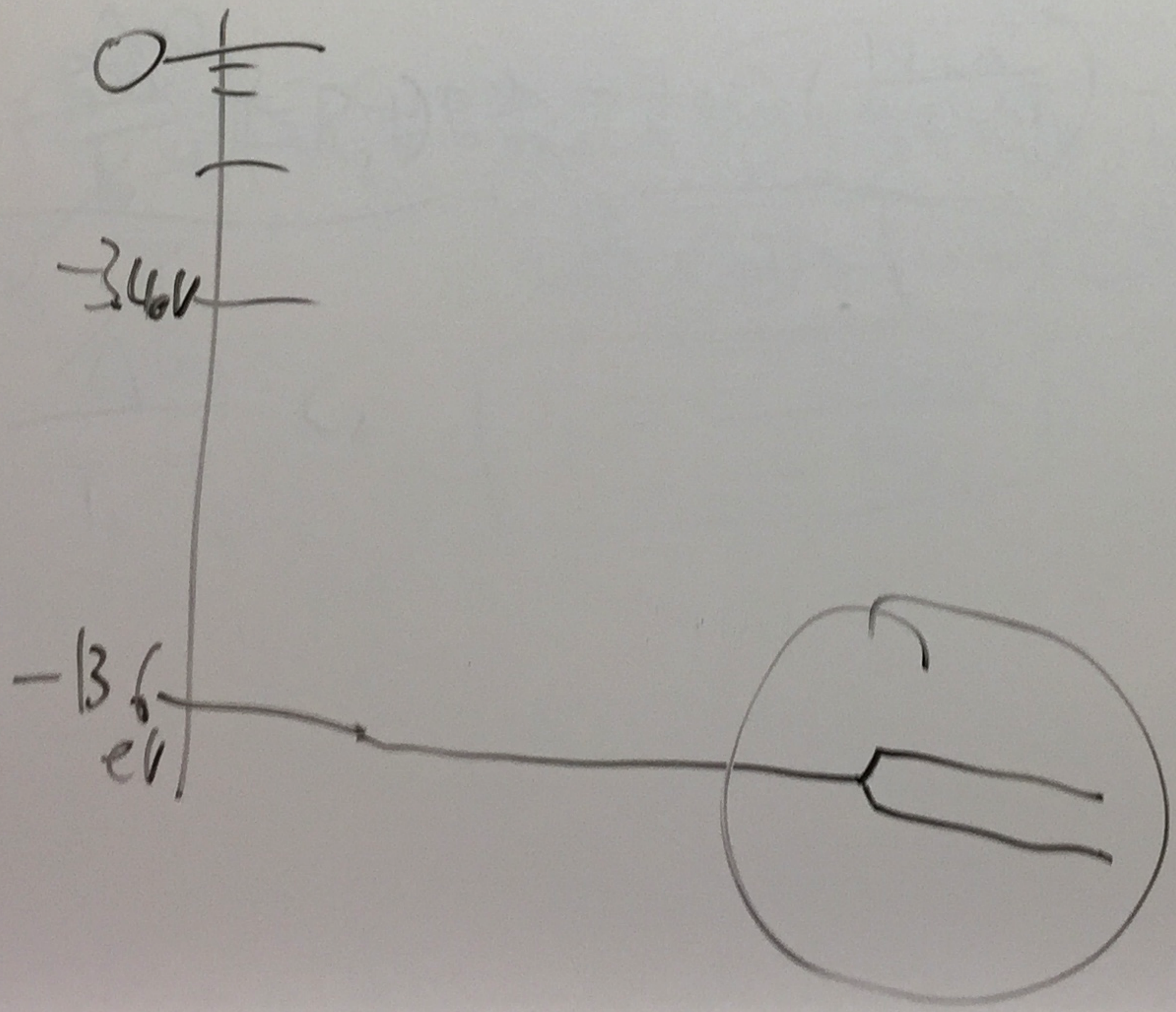


$$\tau = \rho \cdot \kappa \cdot \Delta s$$

$$m = M + 5 \lg \frac{d}{10 \text{ pc}} + A_{\lambda} \rightarrow \text{dust clouds}$$

SS
τ

21cm emission → H gas distribution



$$P = \frac{N}{V} RT$$

$$E_{\text{tot}} = -\frac{3}{10} \frac{GM^2}{R}$$

(kin + pot)

