

Transportation and Parking Advisory Committee

January 12, 2022



OLD DOMINION
UNIVERSITY

TODAY'S AGENDA

- TPS Updates
 - New Parking Lot Signs
 - New Traffic Control
 - Spring start-up
 - Revenue Overview
- Norfolk Multimodal Plan
- Open Discussion
- Trivia Question
- Next Meeting: February 9, 2022



New Parking Lot Signs

- Lot Names and Sign Locations Generally Unchanged
- Clearer Language – Removing Outdated Terms
- Adding Times for Permit and/or Payment Requirements



New Parking Lot Signs



New Parking Lot Signs



New Parking Lot Signs



New Parking Lot Signs



Mobile Pay Locations

4,223 spaces available for hourly parking

421

430

74

20

583

720

59

11

20

769

1,116

New All Way Stop Sign at 49th & Bluestone

- Completed Early December
- Removed Flashing Beacons
- Installed new stop signs, stop bars
- Removed “Yield Here” signs
- West 49th Street now must stop at intersection



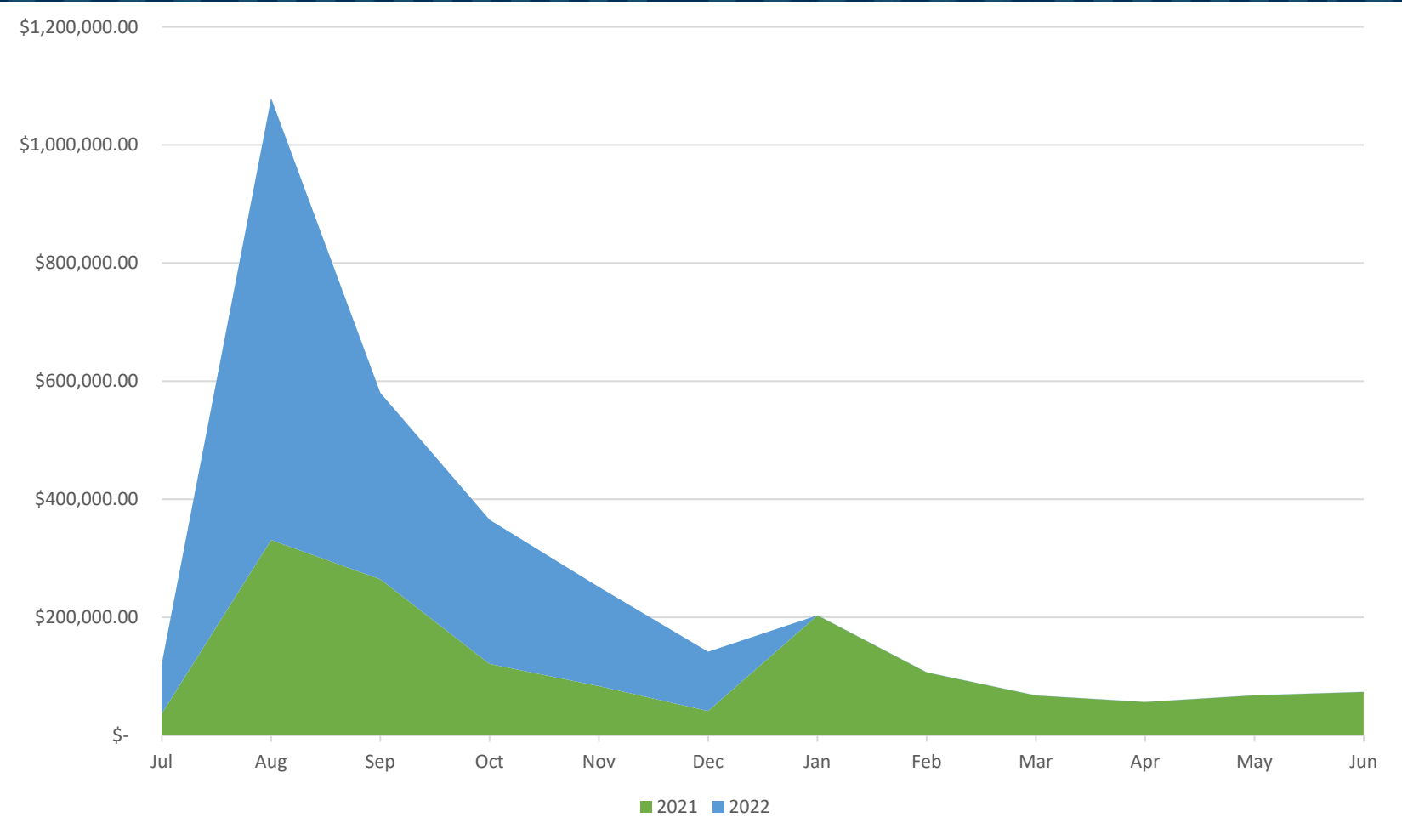
TPS Update: Spring Semester Start Up

- Permit Sales (as of 9AM 1/12/2022)

Customer Type	Active Permits as of 1/12/2022	Mid-November 2021
Student Commuter	3,040	4,265
Student Resident	1,003	1,396
Faculty/Staff	1,439	1,420



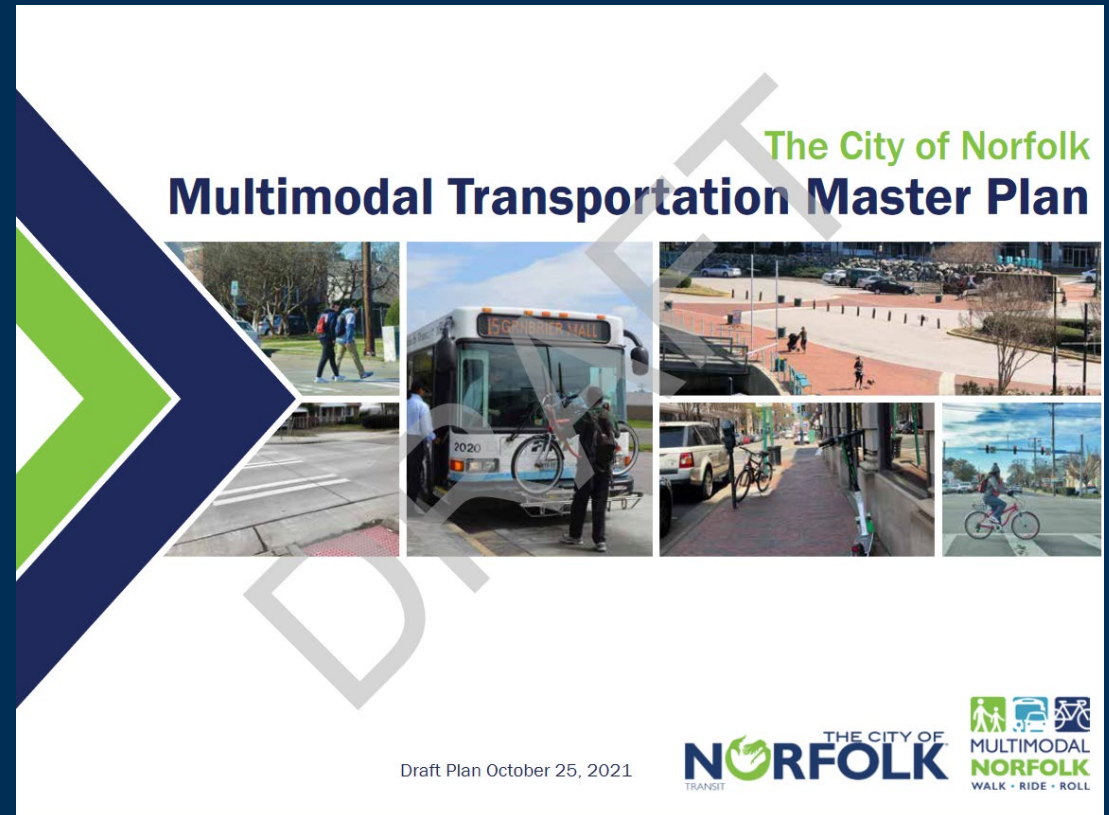
TPS Update: TPS Revenue FY 22 vs FY 21



Norfolk Multimodal Transportation Plan

“Norfolk’s Multimodal Transportation Master Plan ties together all the ways we travel – by foot, bus, bike, scooter, or car – into a single plan to make sure they all work together more safely and comfortably.”

Draft document: 10/25/2021



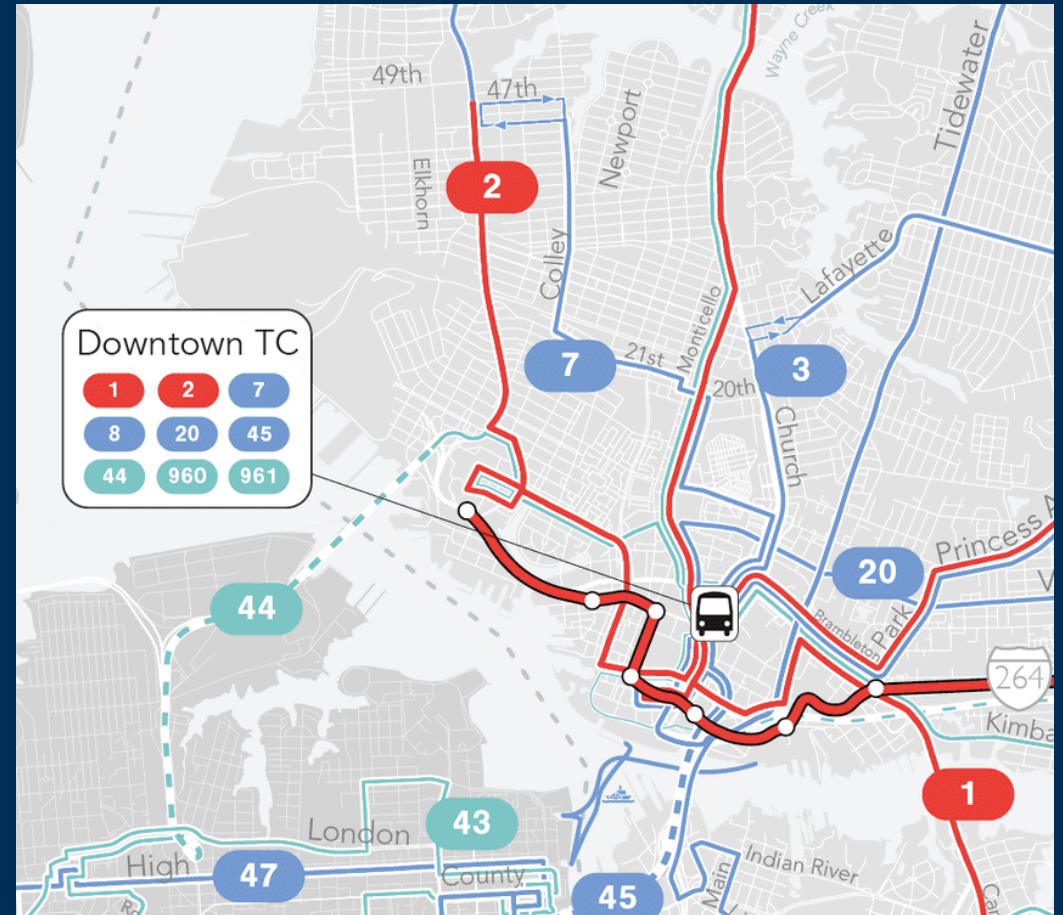
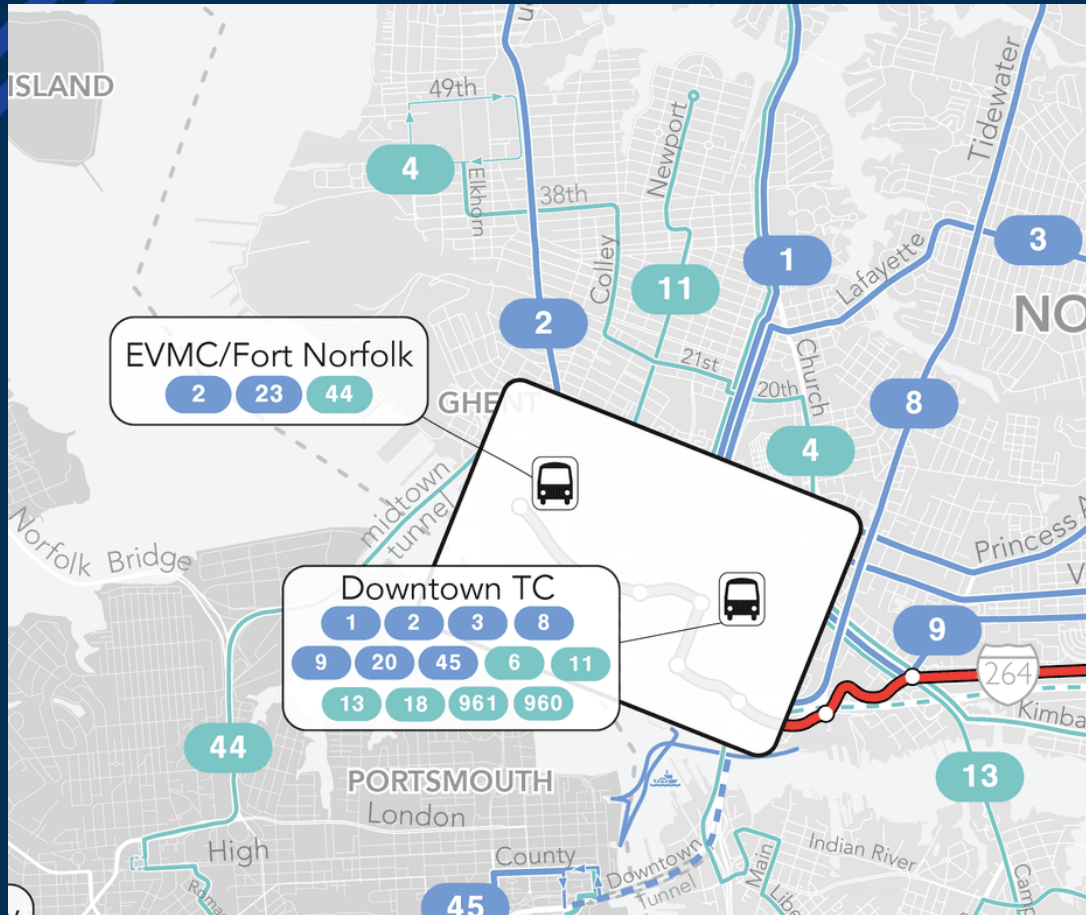
Norfolk Multimodal Transportation Plan

Final Plan will include:

- A city-wide Multimodal System Plan
- Policy Recommendations
- A Multimodal Needs Assessment
- A Program of Projects for Implementation

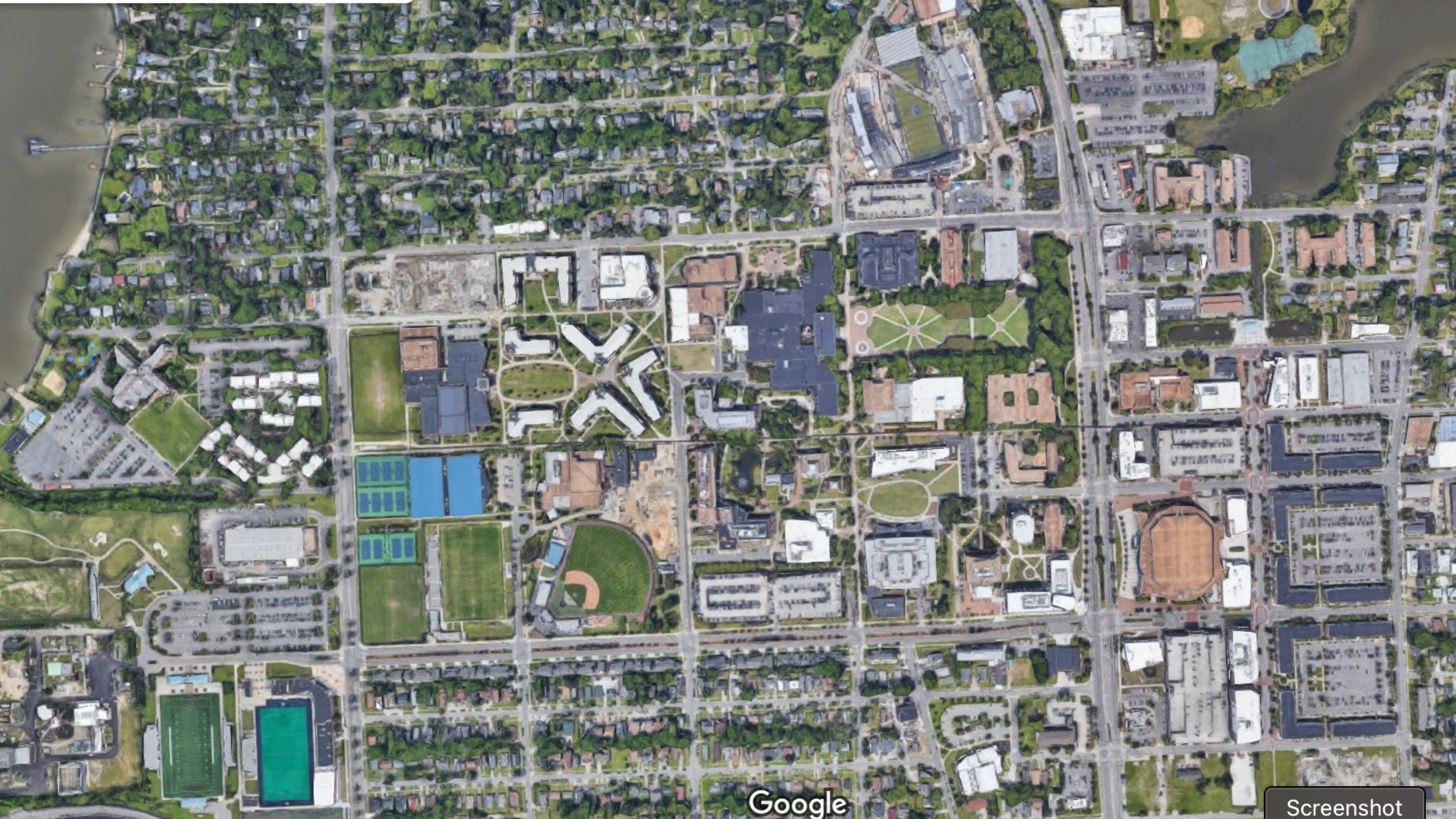


Transit System Redesign – Existing vs Proposed



Questions?





Google

Screenshot

Trivia Question

- In what year did the Manual on Uniform Traffic Control Devices (MUTCD) require all stop signs in the USA to be a RED octagon with white lettering?



Trivia Answer

1954

DON'T . . . TRY TO STOP TODAY'S TRAFFIC WITH YESTERDAY'S SIGNS

. . . NEW 36" STOP SIGN DOES IT!

Even a near-sighted motorist with hay fever will see and heed this sign. The 12-inch letters fairly scream . . . "STOP"! When old and smaller signs won't stop 'em . . . the new Miro-Flex 36-incher does the job . . . quoting letters from users! Made in accordance with specifications in the Manual on Uniform Traffic Control Devices, prepared by American Association of Highway Officials and the Institute of Traffic Engineers, published by U. S. Public Roads Administration.

36"
AVAILABLE IN ALL MODELS

This new 36-incher is a member of a distinguished sign family . . . *Miro-Flex* . . . America's finest complete line of traffic control signs . . . Like all signs in the line, it's available plain embossed or reflectorized, with glass or plastic buttons . . . or with silver reflecting panel. The finish is baked-on enamel. Uniform embossment of the zinc-coated, bonderized steel sign provides a maximum strength . . . *with minimum investment.*

Here's a stop sign that's modern! Write for details, prices!

THRU STOP TRAFFIC

STOP

MANUFACTURED BY
MIRO-FLEX CO., INC.
1824 EAST SECOND STREET • WICHITA, KANSAS

Source: roadtrafficsigns.com: 1924-1954 – When yellow stop signs were the rule.



Next Meeting Date:

Wednesday February 16, 2022

1:00 PM via Zoom

